

Length // ► Feed direction

Width



Stone

Figure drawn to scale 1:1

Stone



Available materials*



Steel



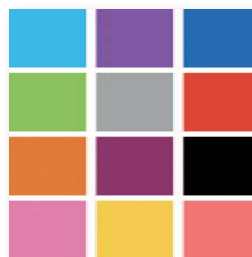
Sendzimir-galvanised



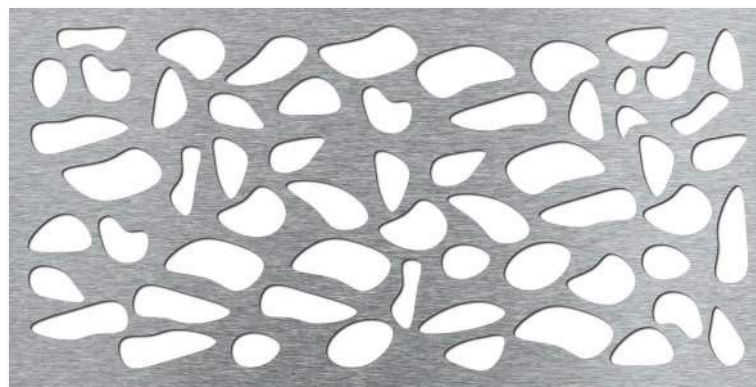
Aluminium



Stainless steel



Powder-coated



Available in standard formats and **individual dimensions (w x l)** of at least 125 x 300 mm to maximum 1,500 x 3,000 mm, as well as in sheet thicknesses from 1.0 to 3.0 mm.

* Not all materials available in all formats and sheet thicknesses.



DESIGN AND ORDER ONLINE

This product can only be found online in our MEVACO Product Designer. Simply log in and design the product individually.

