

Length // ► Expansion direction

Width



# Prisma 225x24x7.5

Figure drawn to scale 1:1

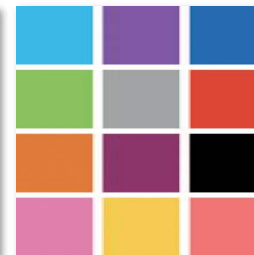
## Prisma 225x24x7.5



### Available materials\*

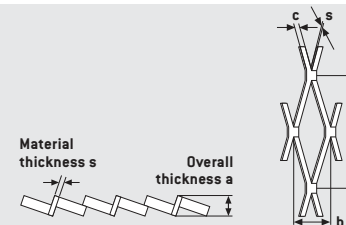


Steel



Powder-coated

Available in standard formats and individual dimensions (w x l) of at least 300 x 300 mm to maximum 2,500 x 3,000 mm, as well as in material thicknesses from 1.5 to 3.0 mm.



Expanded metal  
l = 225 mm  
b = 24 mm  
c = 7.5 mm  
Open area: 37 %  
Figure above in bridge  
thickness 2.0 mm

\* Not all materials are available in all formats and sheet thicknesses.



## DESIGN AND ORDER ONLINE

You can only find this product online in our MEVACO Configurator. Simply log in and configure the product individually.

