

Length

Width



Decorative mesh PC-Omega 1520

Figure drawn to scale 1:1

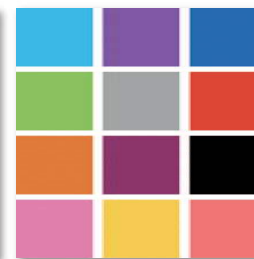
Decorative mesh PC-Omega 1520



Available materials*

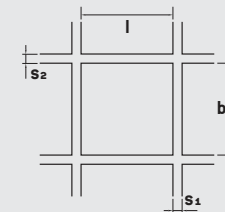


Stainless steel



Powder-coated

Available in standard formats and **individual dimensions (w x l)** of at least **300 x 300 mm** to maximum **1,500 x 3,000 mm**, as well as in sheet thicknesses of **2.0 mm**.



Decorative mesh
l = 3.5 mm
b = 17.5 mm
Weft wire $s_1 = 1.5$ mm
Warp wire $s_2 = 2.0$ mm

* Not all materials are available in all formats and sheet thicknesses.



SELECT AND ORDER ONLINE

All variants of this product can be found online in our shop. **Simply enter the product name in the online search.**

