



HELM Hardware for Sliding Wardrobe Doors

 HELM

Sliding hardware

General Information

Introduction	Page 3
Installation types	Page 4
Overview Hardware	Page 6

Sliding Hardware for Wardrobes

HELM 25 up to 28 kg door weight	Page 8
HELM 28 up to 30 kg door weight	Page 10
HELM 54 enclosed, up to 50 kg door weight	Page 14
HELM 54 semi-enclosed, up to 50 kg door weight	Page 18
HELM 64 enclosed, up to 80 kg door weight	Page 22
HELM 64 semi-enclosed, up to 80 kg door weight	Page 26
HELM 260 front-mounted, up to 80 kg door weight	Page 30

Appendix

Sample of Request for Proposal	Page 34
Enquiry Form	Page 35





HELM comfort for furniture and walk-in wardrobes

For enclosed, semi-enclosed and front-mounted wardrobe sliding doors HELM offers various hardware systems for all common door weights and installation situations.

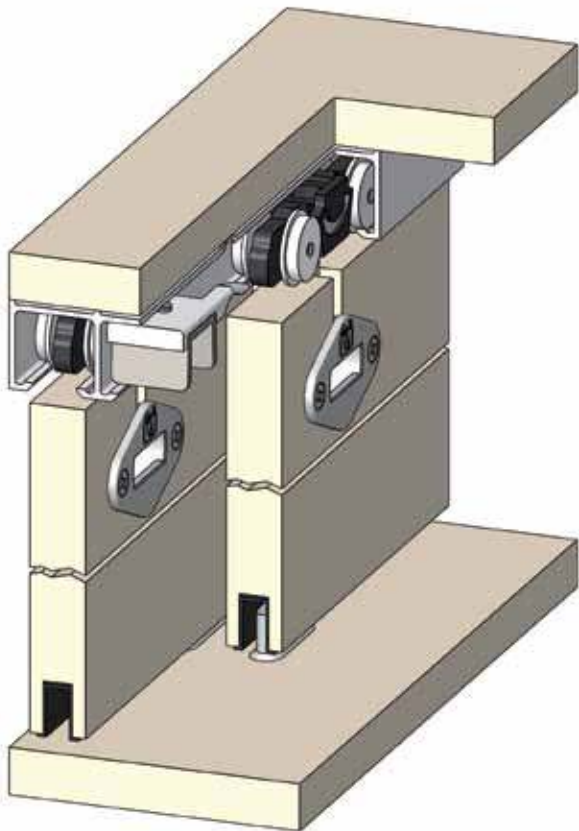
For lightweight doors up to 30 kg we recommend the hardware HELM 25 and HELM 28 and for mediumweight doors up to 50 kg the hardware HELM 54. The hardware HELM 64 and HELM 260 are designed for heavyweight wardrobe doors up to 80 kg and heavy duty. Ball bearing mounted rollers guarantee specially smooth-running sliding doors and a long service life.

In order to make the choice of the suitable hardware system easier, you will find an overview in the following table:

Hardware	HELM 25	HELM 28	HELM 28 1/2	HELM 54	HELM 64	HELM 260
leaf weight	up to 28 kg	up to 30 kg	up to 30 kg	up to 50 kg	up to 80 kg	up to 80 kg
leaf thickness:	up to 20 mm	up to 28 mm	up to 28 mm	up to 28 mm	up to 28 mm	up to 28 mm
enclosed	●	●	●	●	●	○
semi-enclosed	●	●	●	●	●	○
front-mounted	○	○	○	○	○	●

● = yes ○ = no

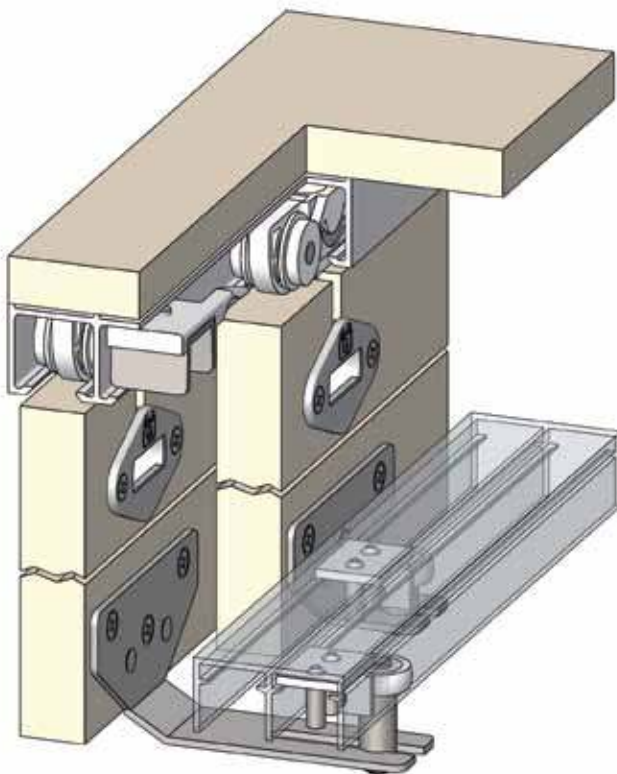
fig. 1



Enclosed wardrobe doors (fig. 1)

- for timber doors
- two-track, enclosed, top hung
- door weight up to 80 kg
- door thicknesses of 19, 22, 25 and 28 mm
- adjustment range for height +4 mm
- door widths from 500 mm
- two and three-leaf doors

fig. 2



Semi-enclosed wardrobe doors (fig. 2)

- for timber doors
- two-track, semi-enclosed, top hung
- door weight up to 80 kg
- door thicknesses of 19, 22, 25 and 28 mm
- adjustment range for height +4 mm
- door widths from 500 mm
- two and three-leaf doors

Front-mounted wardrobe doors (fig. 3)

- for timber doors
- two-track, front-mounted, top hung
- door weight up to 80 kg
- door thicknesses of 19, 22, 25 and 28 mm
- adjustment range for height +4 mm
- door widths from 500 mm
- two and three-leaf doors

fig. 3

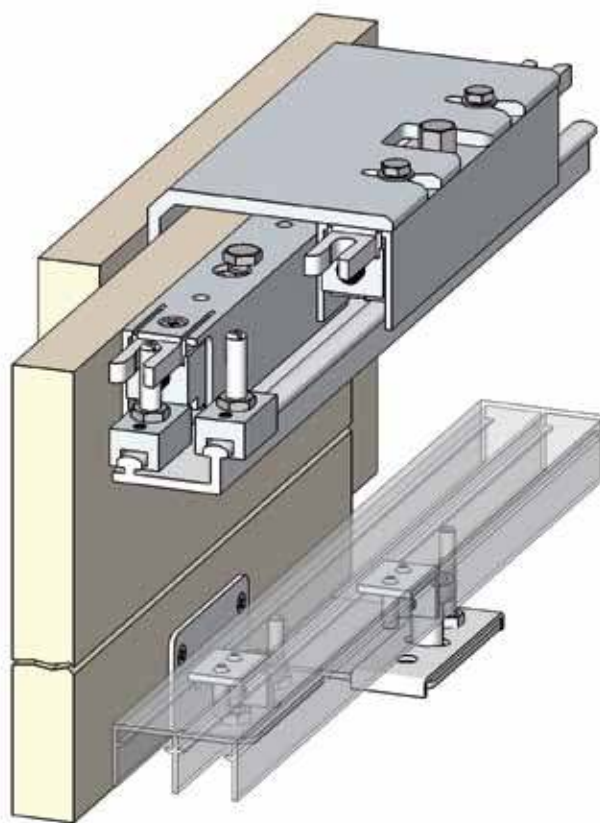
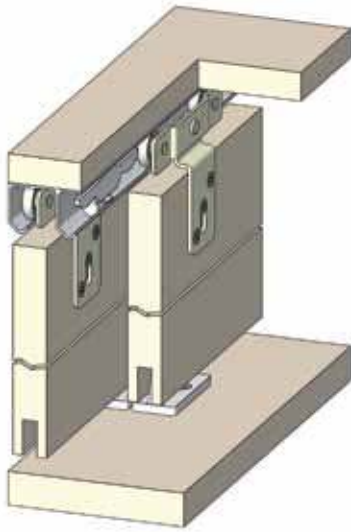


fig. 1



Cabinet sliding hardware HELM 25 up to 28 kg door weight

Track

aluminium natural-finished, in stock lengths of 6000 mm or cut to size

Special feature

small track profile

Trolley hanger

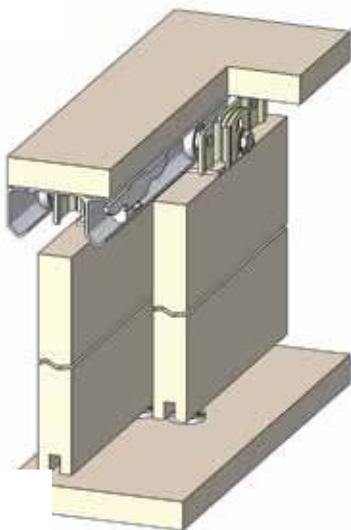
uniaxial and biaxial, with plastic rollers and ball bearings

Realisable options

- leaf thickness of 19 - 20 mm
- enclosed/semi-enclosed

Further information from page 8

fig. 2



Cabinet sliding hardware HELM 28 up to 30 kg door weight

Track

aluminium natural-finished and steel zinc-plated, in stock lengths of 6000 mm or cut to size

Special feature

small track profile

Trolley hanger

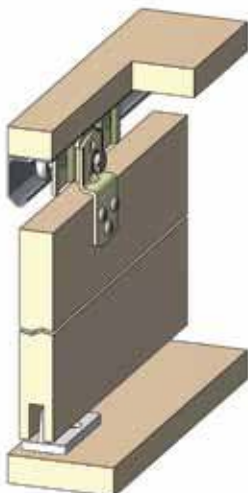
uniaxial and biaxial, with plastic rollers and ball bearings

Realisable options

- leaf thicknesses up to 28 mm
- semi-enclosed/enclosed

Further information from page 10

fig. 3



Cabinet sliding hardware HELM 28 1/2 up to 30 kg door weight

Track

aluminium natural-finished, in stock lengths of 6000 mm or cut to size

Special feature

small track profile

Trolley hanger

uniaxial and biaxial, with plastic rollers and ball bearings

Realisable options

- leaf thicknesses up to 28 mm
- enclosed

Further information from page 10

Cabinet sliding hardware HELM 54 up to 50 kg door weight

Track

aluminium natural-finished, in stock lengths of 6000 mm or cut to size

Special feature

double track profile, no facing required, easy installation

Trolley hanger

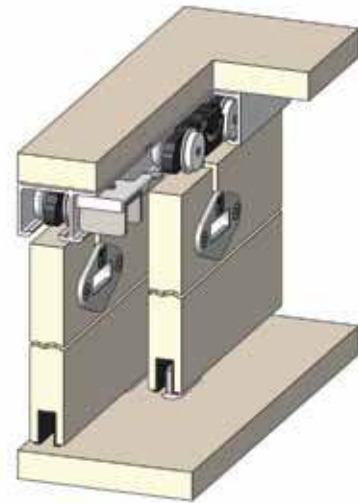
double pair, with plastic rollers and plain bearings

Realisable options

- leaf thicknesses up to 28 mm
- two-leaf and three-leaf installations
- enclosed/semi-enclosed

Further information from page 14

fig. 4



Cabinet sliding hardware HELM 64 up to 80 kg door weight

Track

aluminium natural-finished, in stock lengths of 6000 mm or cut to size

Special feature

double track, no facing required, easy installation, sophisticated design, adjustable bottom guide

Trolley hanger

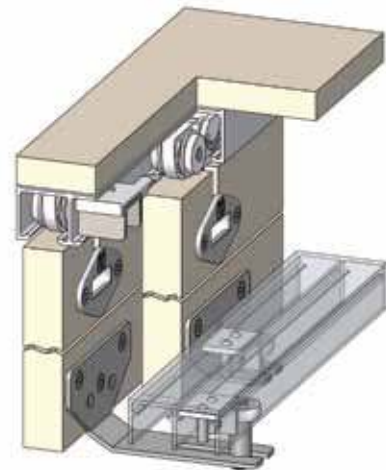
double pair, with plastic rollers and ball bearings

Realisable options

- leaf thicknesses up to 28 mm
- double and three-leaf installations
- semi-enclosed/enclosed
- for heavy service wardrobe sliding doors

Further information from page 22

fig. 5



Cabinet sliding hardware HELM 260 up to 80 kg door weight

Track

aluminium silver anodised, in stock lengths of 6000 mm or cut to size

Trolley hanger

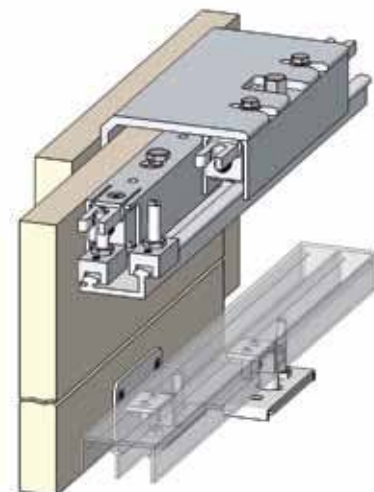
biaxial with bracket, with plastic rollers and ball bearings

Realisable options

- leaf thickness of 19 - 28 mm
- double and three-leaf installations
- front-mounted
- for heavy and heavy duty service wardrobe sliding doors

Further information from page 30

fig. 6



HELM 25

up to 28 kg door weight

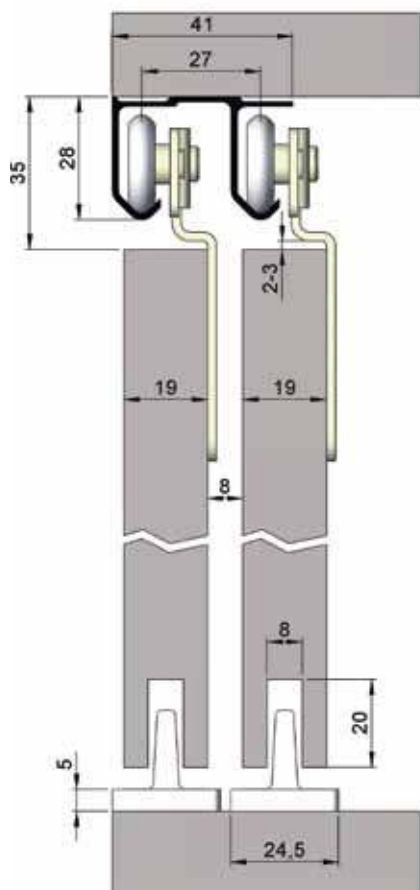
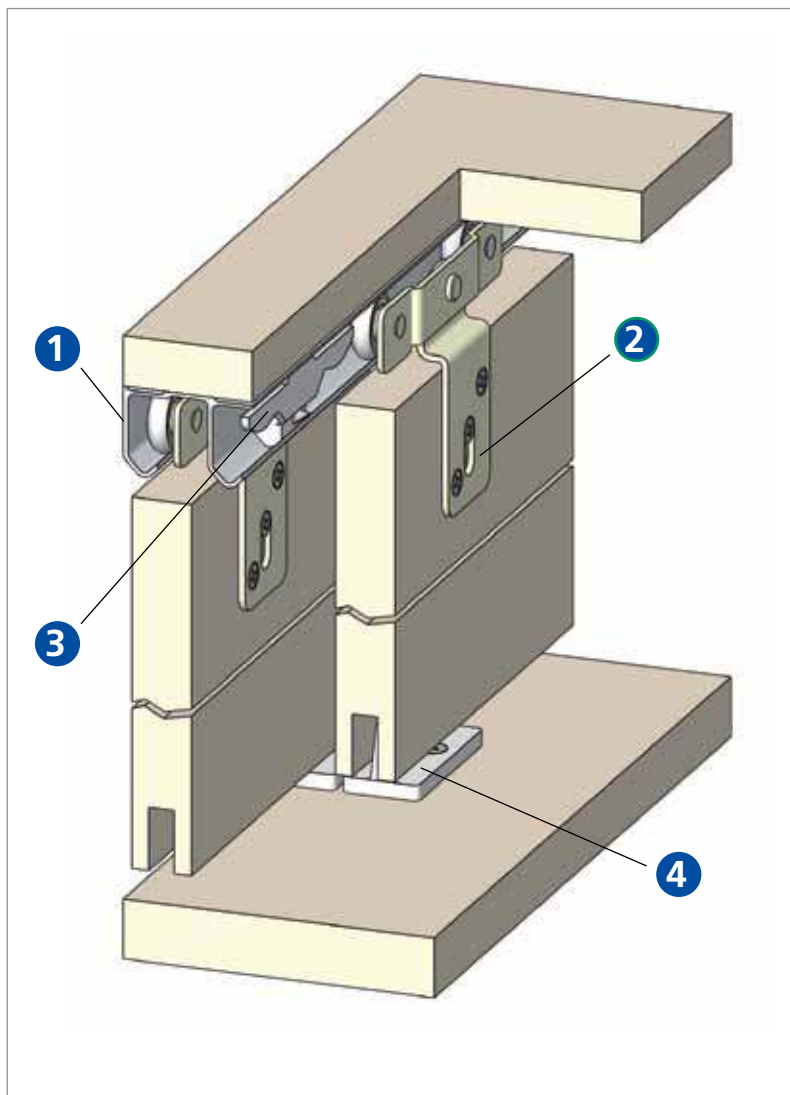
HELM 25

Product features

- small track profile
- easy installation
- simple height adjustment
- aluminium track profile
- long-lasting smooth and quiet running due to the use of ball bearings and plastic rollers

A fitting for a double cabinet sliding door includes:

- 1 piece double track profile
- 4 pieces trolley hangers
- 4 pieces door catchers
- 2 pieces bottom guides



Accessories set no. 26, (EDP no. 002683)

2 x trolley hangers no. 26
2 x door catchers no. 28 P
1 x bottom guide no. 214

max.
20 kg
Leaf weight

Accessories set no. 27, (EDP no. 002783)

2 x trolley hangers no. 27
2 x door catchers no. 28 P
1 x bottom guide no. 214

max.
28 kg
Leaf weight

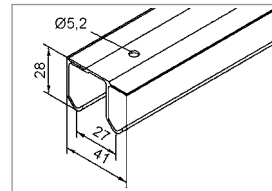
Single components

1 Double track profile no. 25

Aluminium natural-finished, in stock lengths of 6000 mm or cut to size drill holes approx. every 200 mm

Part no.

stock length, natural-finished	002551
cut to length, natural-finished	002552

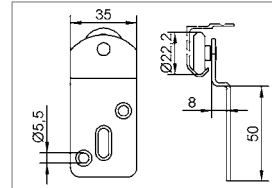


2 Trolley hanger

Trolley hanger no. 26 uniaxial, up to 20 kg door weight, plastic roller with ball bearing

Part no.

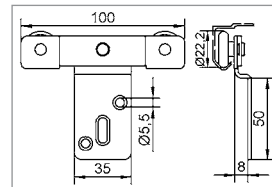
zinc-plated	002682
-------------	--------



Trolley hanger no. 27 biaxial, up to 28 kg door weight, plastic rollers with ball bearing

Part no.

zinc-plated	002782
-------------	--------

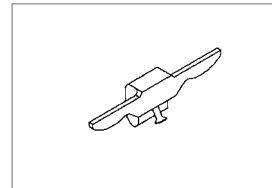


3 Door catcher no. 28 P

Plastic, white

Part no.

plastic	002800
---------	--------

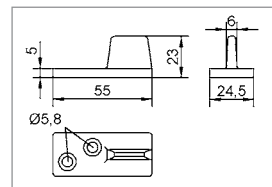


4 Bottom guide no. 214

Plastic, white

Part no.

plastic	021461
---------	--------



HELM 28

up to 30 kg door weight

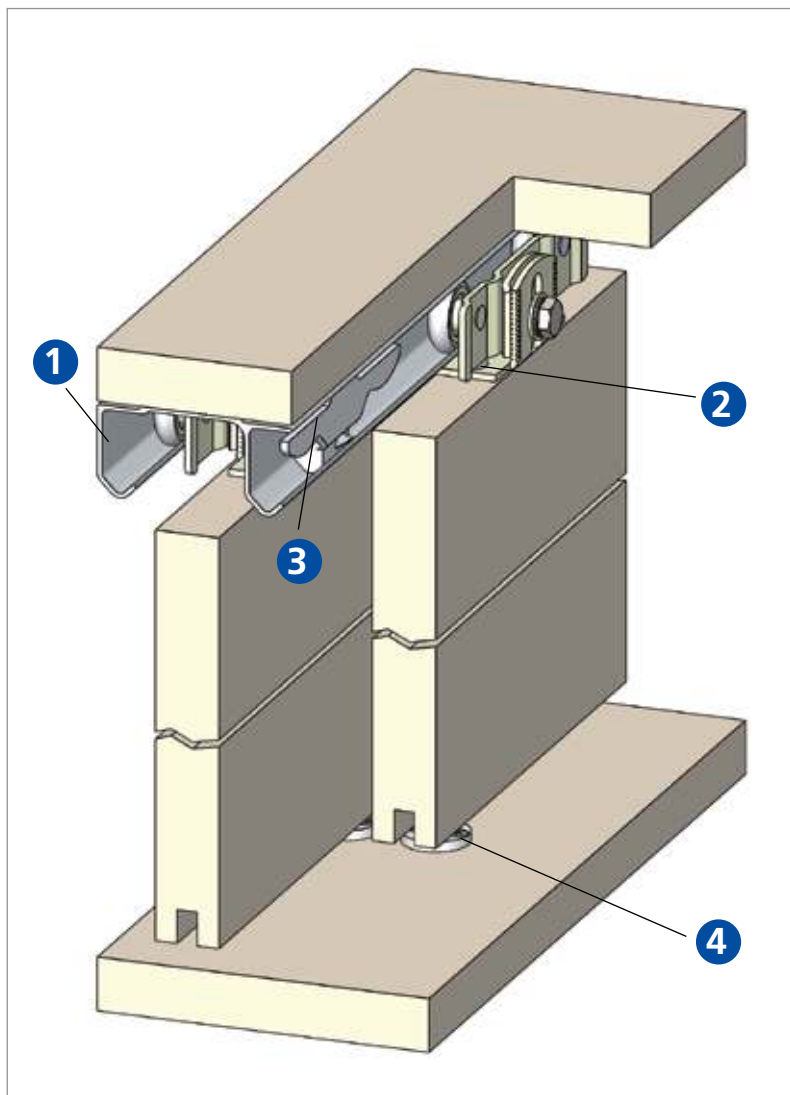
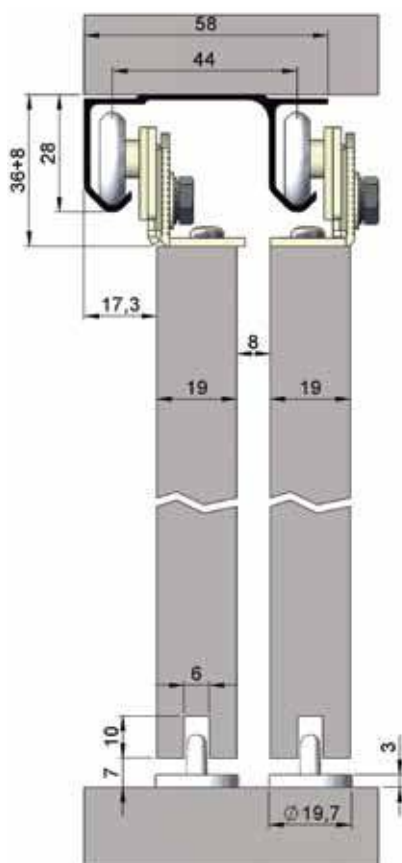
HELM 28

Product features

- small track profile
- easy installation
- simple height adjustment
- aluminium track profile
- long-lasting smooth and quiet running due to the use of ball bearings and plastic rollers

A fitting for a double cabinet sliding door includes:

- 1 piece double track profile
- 4 pieces trolley hangers
- 4 pieces door catchers
- 2 pieces bottom guides



Accessories set no. 28, (EDP no. 002881)

2 x trolley hangers no. 28
2 x door catchers no. 28 P
1 x bottom guide no. 214

max.
20 kg
Leaf weight

Accessories set no. 28 K (EDP no. 002883)

2 x trolley hangers no. 28 K
2 x door catchers no. 28 P
1 x bottom guide no. 214

max.
20 kg
Leaf weight

Accessories set no. 28 K (EDP no. 00288301)

2 x trolley hangers sno. 28 K
2 x door catchers no. 28 P
1 x bottom guide no. 14 R

max.
20 kg
Leaf weight

Accessories set no. 29 (EDP no. 002981)

2 x trolley hangers no. 29
2 x door catchers no. 28 P
1 x bottom guide no. 214

max.
30 kg
Leaf weight

Accessories set no. 29 K (EDP no. 002983)

2 x trolley hangers no. 29 K
2 x door catchers no. 28 P
1 x bottom guide no. 214

max.
30 kg
Leaf weight

Accessories set no. 29 K (EDP no. 00298301)

2 x trolley hangers no. 29 K
2 x door catchers no. 28 P
1 x bottom guide no. 14 R

max.
30 kg
Leaf weight

Accessories set no. 30 K (EDP no. 003083)

2 x trolley hangers no. 30 K
2 x door catchers no. 28 P
1 x bottom guide no. 14 R

max.
22 kg
Leaf weight

Accessories set no. 31 K (EDP no. 003181)

2 x trolley hangers no. 31 K
2 x door catchers no. 28 P
1 x bottom guide no. 14 R

max.
30 kg
Leaf weight

Single components

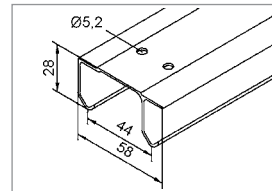
1 Double track profile no. 28

Double track profile no. 28 aluminium natural-finished or steel zinc-plated, in stock lengths of 6000 mm or cut to size, drill holes approx. every 200 mm

Track profile no. 28 1/2 aluminium natural-finished, in stock lengths of 6000 mm or cut to size, drill holes approx. every 200 mm

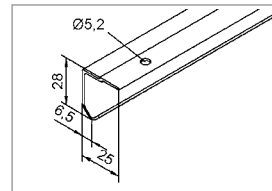
Part no.

stock length, natural-finished	002851
cut to length, natural-finished	002852
stock length, zinc-plated	002823
cut to length, zinc-plated	002824



Part no.

stock length, natural-finished	002853
cut to length, natural-finished	002854

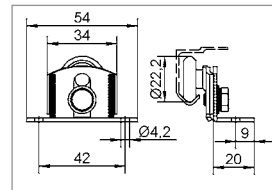


2 Trolley hanger

Trolley hanger no. 28 zinc-electroplated uniaxial, up to 20 kg door weight, plastic roller with ball bearing

Part no.

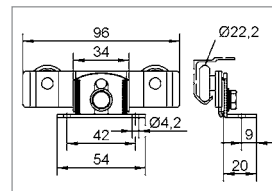
zinc-plated	002880
-------------	--------



Trolley hanger no. 29 zinc-electroplated, biaxial, up to 30 kg door weight, plastic roller with ball bearing

Part no.

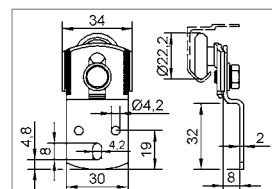
zinc-plated	002980
-------------	--------



Trolley hanger no. 28 K zinc-plated uniaxial, up to 20 kg door weight, plastic roller with ball bearing

Part no.

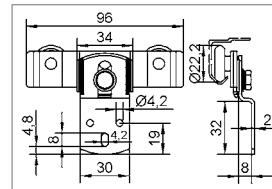
zinc-plated	002882
-------------	--------



Trolley hanger no. 29 K zinc-plated biaxial, up to 30 kg door weight, plastic roller with ball bearing

Part no.

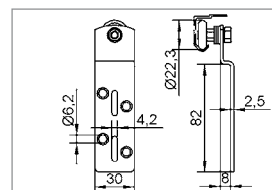
zinc-plated	002982
-------------	--------



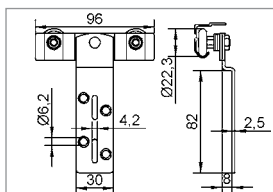
Trolley hanger no. 30 K zinc-plated uniaxial, up to 22 kg door weight, plastic roller with ball bearing

Part no.

plastic	003082
---------	--------



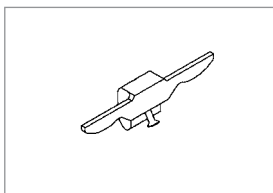
Single components



Trolley hanger no. 31 K
zinc-electroplated
biaxial, up to 30 kg door
weight, plastic roller with
ball bearing

Part no.

zinc-plated	003180
-------------	--------

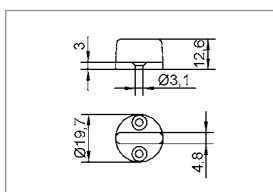


3 Door catcher no. 28 P

Plastic, white

Part no.

plastic	002800
---------	--------



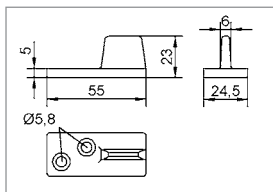
4 Bottom guide no. 14 R

Plastic, white

Part no.

plastic	001461
---------	--------

Additional bottom guides

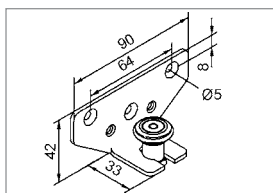


Bottom guide no. 214

Plastic, white

Part no.

plastic	021461
---------	--------

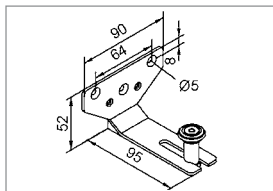


Guide roller no. 41

Bracket (short), zinc-plated,
plastic roller with rubber
ring

Part no.

zinc-plated	004120
-------------	--------

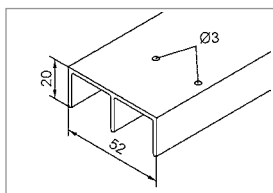


Guide roller no. 42

Bracket (long), zinc-plated,
plastic roller with rubber
ring

Part no.

zinc-plated	004220
-------------	--------



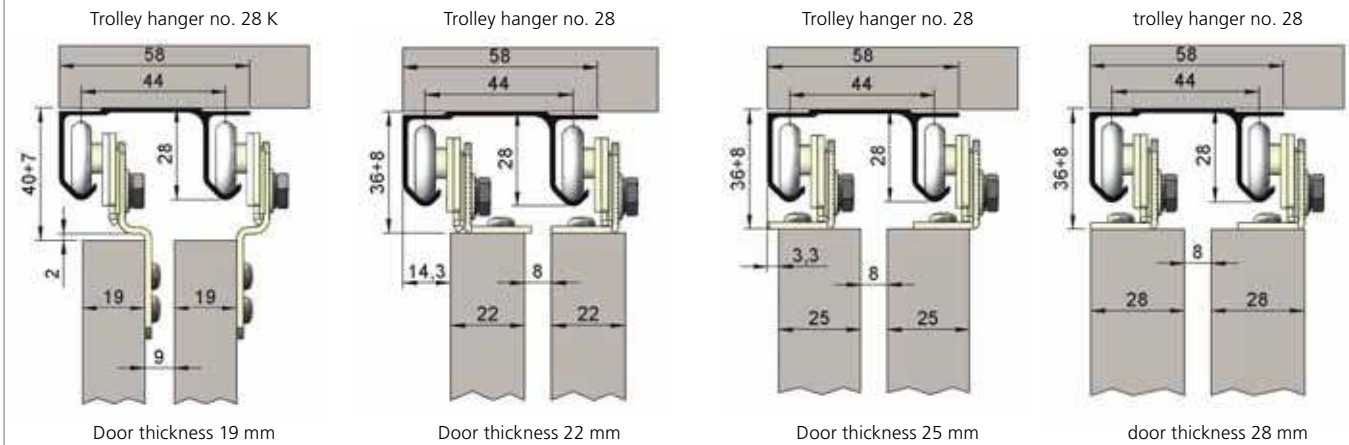
Double bottom guide profile no. 40

Aluminium natural-finish,
in stock lengths of 6000
mm or cut to size, drilled
approx. every 250 mm

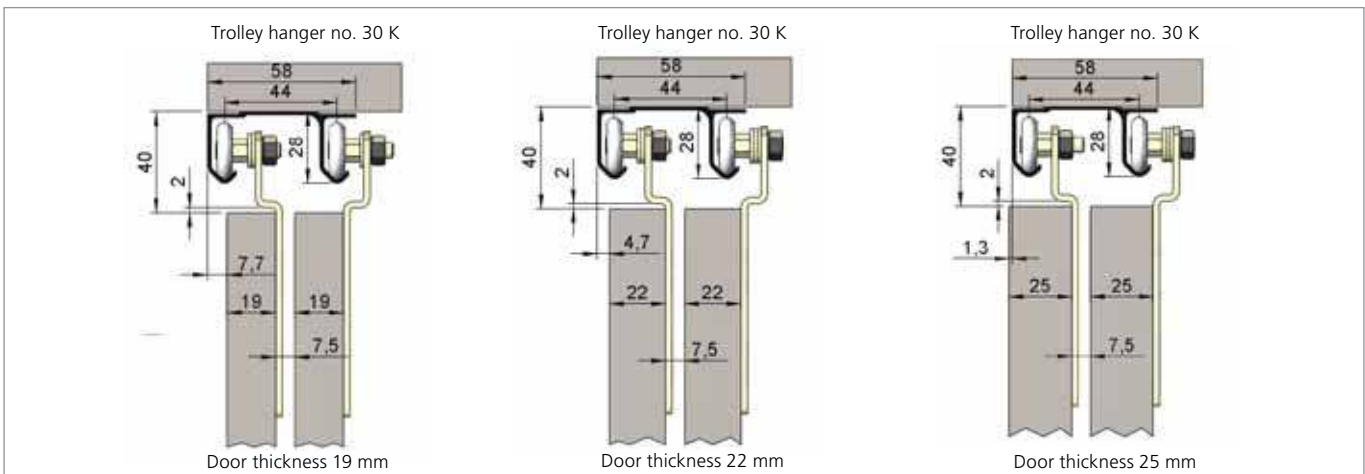
Part no.

stock length, natural-finished	004010
cut to length, natural-finished	004011

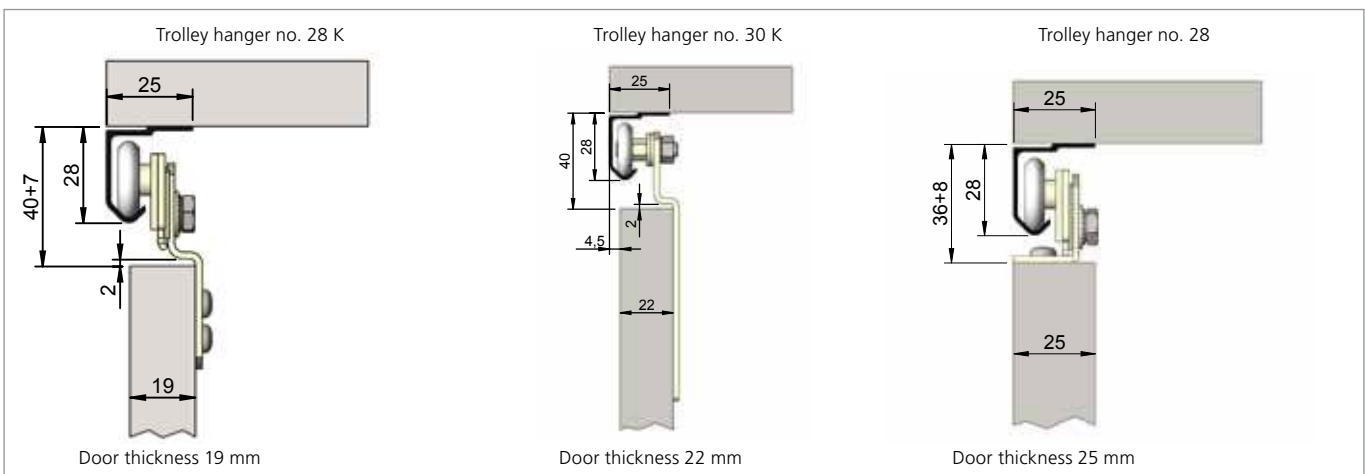
Double track profile no. 28



Double track profile no. 28



Track profile 28 1/2



HELM 54

enclosed, up to 50 kg door weight

HELM 54

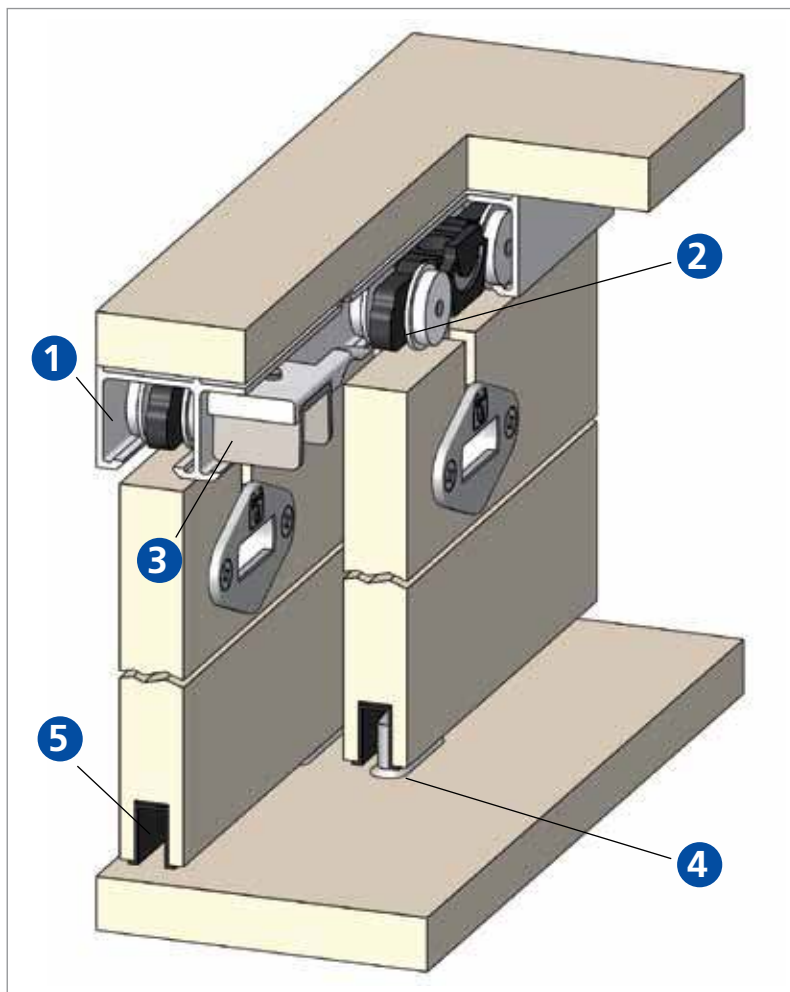
enclosed cabinet doors

Product features

- small track profile
- easy installation
- simple height adjustment
- aluminium track profile
- long-lasting smooth and quiet running due to the use of plain bearings and plastic rollers

A fitting for a double cabinet sliding door includes:

- 1** 1 piece double track profile
- 2** 4 pieces trolley hangers
- 3** 4 pieces door catchers
- 4** 2 pieces bottom guides
- 5** 2 pieces bottom guide profile



Scope of supply for double and three-leaf installations - for 19, 22, 25 and 28 mm door thickness

Scope of supply for double installations (EDP no. 054.120000.044), for 19, 22, 25 and 28 mm door thickness

2 x trolley hangers no. 54
2 x door catchers no. 65 P
2 x bottom guide no. 84-14



Scope of supply for three-leaf installations (EDP no. 054.120000.044), for 19, 22, 25 and 28 mm door thickness

6 x trolley hangers no. 54
2 x door catchers no. 65 P
3 x bottom guide no. 84-14



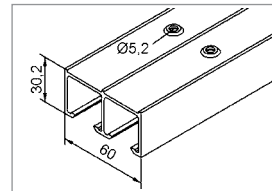
Single components

1 Double track profile no. 62

Aluminium natural-finished, in stock lengths of 6000 mm or cut to size, drilled approx. every 250 mm

Part no.

stock length, natural-finished	006251
cut to length, natural-finished	006252

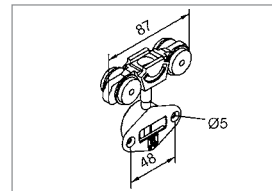


2 Trolley hanger no. 54

Plastic, double pair, with top flange zinc-plated, plain bearing

Part no.

plastic	054050091001
---------	--------------

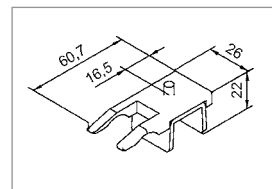


3 Door catcher no. 65 P

Zinc-plated, plastic

Part no.

zinc-plated/plastic	006500
---------------------	--------

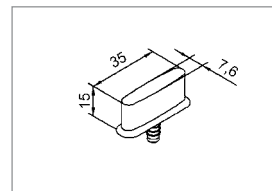


4 Bottom guide no. 84-14

Zinc die-cast

Part no.

zinc die-cast	084100014001
---------------	--------------

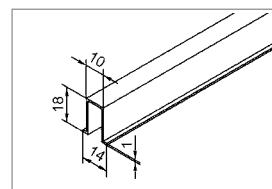


5 Bottom guide profile no. 84

Plastic, in stock lengths of approx. 2500 mm

Part no.

stock length	084090006047
cut to length	084090006048



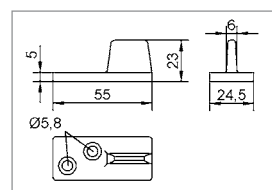
Additional accessories

Bottom guide no. 214

Plastic, white

Part no.

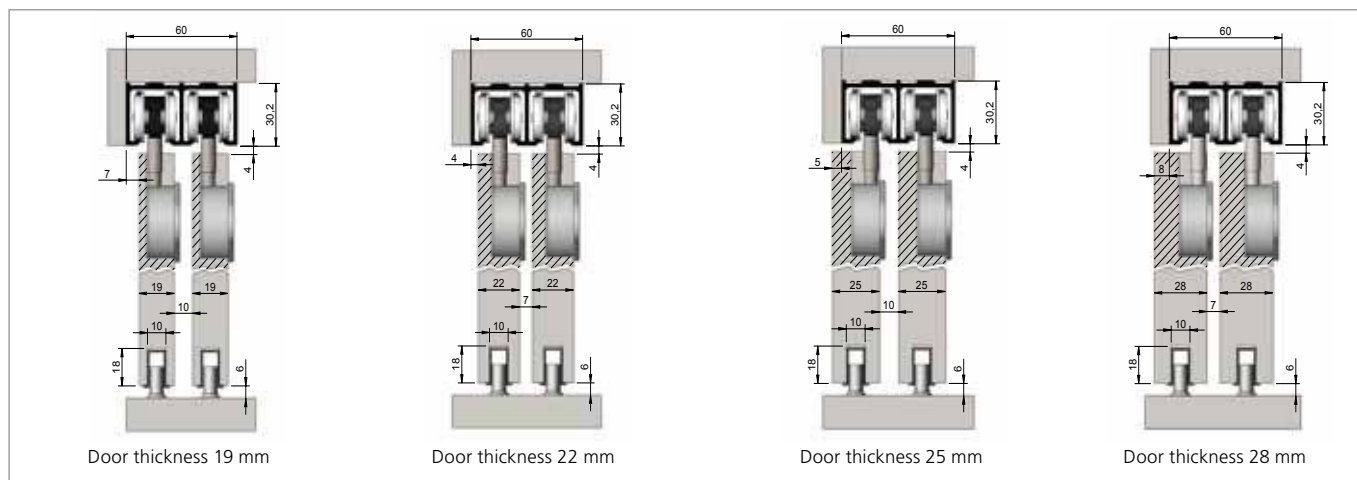
plastic	021461
---------	--------



HELM 54

enclosed, up to 50 kg door weight

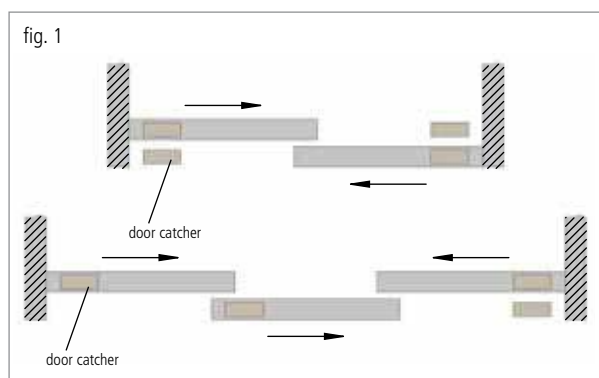
Double track profile no. 62



Mounting notes:

In case of three-leaf installations the leaf in the middle can generally only be arrested by the door catcher when closed and can only be pushed in one direction.

With every fitting detailed mounting instructions are enclosed that we place at your disposal on request to facilitate the planning.



HELM 54

semi-enclosed, up to 50 kg door weight

HELM 54

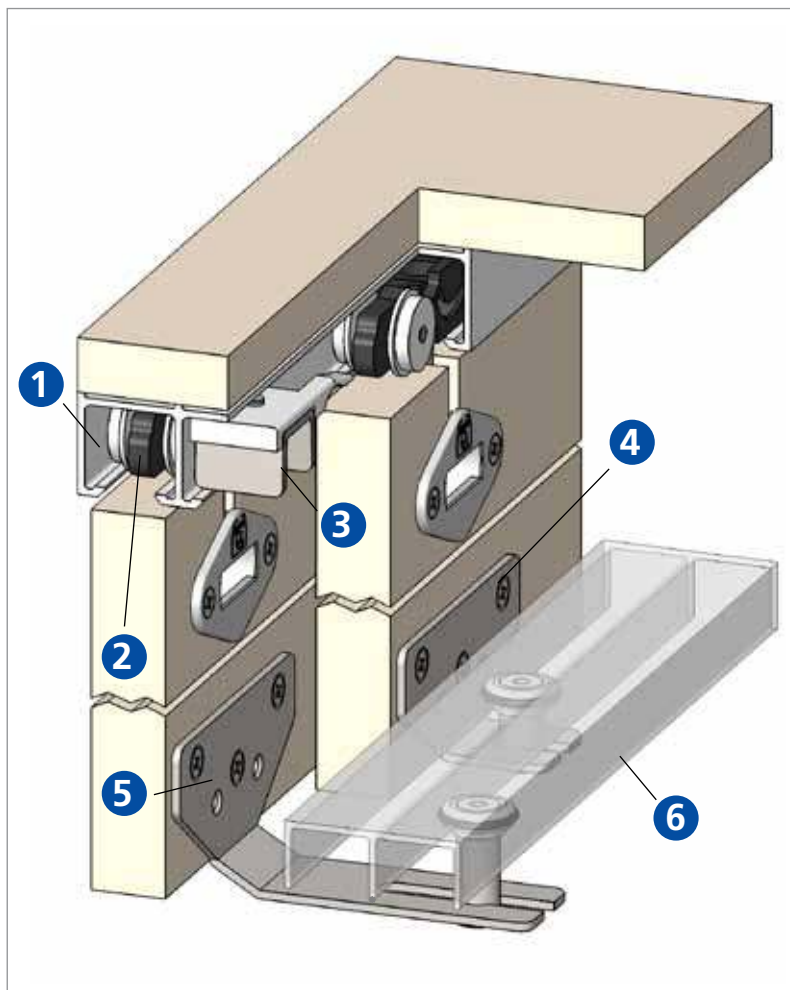
semi-enclosed cabinet doors

Product features

- small track profile
- easy installation
- simple height adjustment
- aluminium track profile
- long-lasting smooth and quiet running due to the use of plain bearings and plastic rollers

A fitting for a double cabinet sliding door includes:

- 1** 1 piece double track profile
- 2** 4 pieces trolley hangers
- 3** 4 pieces door catchers
- 4** 2 pieces guide rollers short
- 5** 2 pieces guide rollers long
- 6** 1 piece double bottom guide profile



Scope of supply for double and three-leaf installations - for 19, 22, 25 and 28 mm door thickness

Scope of supply for double installations (EDP no. 054.120000.046), for 19, 22, 25 and 28 mm door thickness

4 x trolley hangers no. 54
4 x door catchers no. 65 P
2 x guide rollers no. 41
2 x guide rollers no. 42



Scope of supply for three-leaf installations (EDP no. 054.120000.047), for 19, 22, 25 and 28 mm door thickness

6 x trolley hangers no. 54
4 x door catchers no. 65 P
4 x guide rollers no. 41
2 x guide rollers no. 42



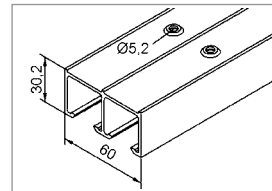
Single components

1 Double track profile no. 62

Aluminium natural-finished, in stock lengths of 6000 mm or cut to size, drilled approx. every 250 mm

Part no.

stock length, natural-finished	006251
cut to length, natural-finished	006252

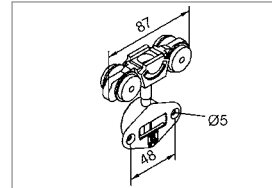


2 Trolley hanger no. 54

Plastic, double pair, with top flange zinc-plated, plain bearing

Part no.

plastic	054050091001
---------	--------------

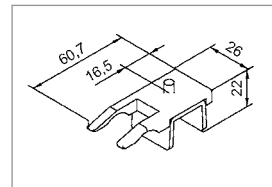


3 Door catcher no. 65 P

Zinc-plated, plastic

Part no.

zinc-plated/plastic	006500
---------------------	--------

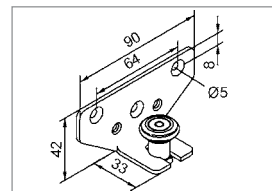


4 Guide roller no. 41

Bracket zinc-plated, roller of plastic with rubber ring

Part no.

zinc-plated	004120
-------------	--------

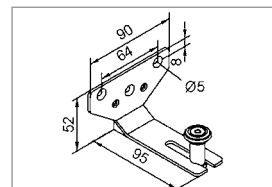


5 Guide roller no. 42

Bracket zinc-plated, roller of plastic with rubber ring

Part no.

zinc-plated	004220
-------------	--------

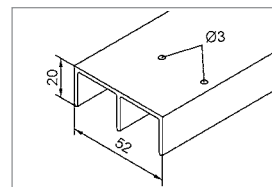


6 Double bottom guide profile no. 40

Aluminium natural-finished, in stock lengths of 6000 mm or cut to size, drill holes approx. every 250 mm

Part no.

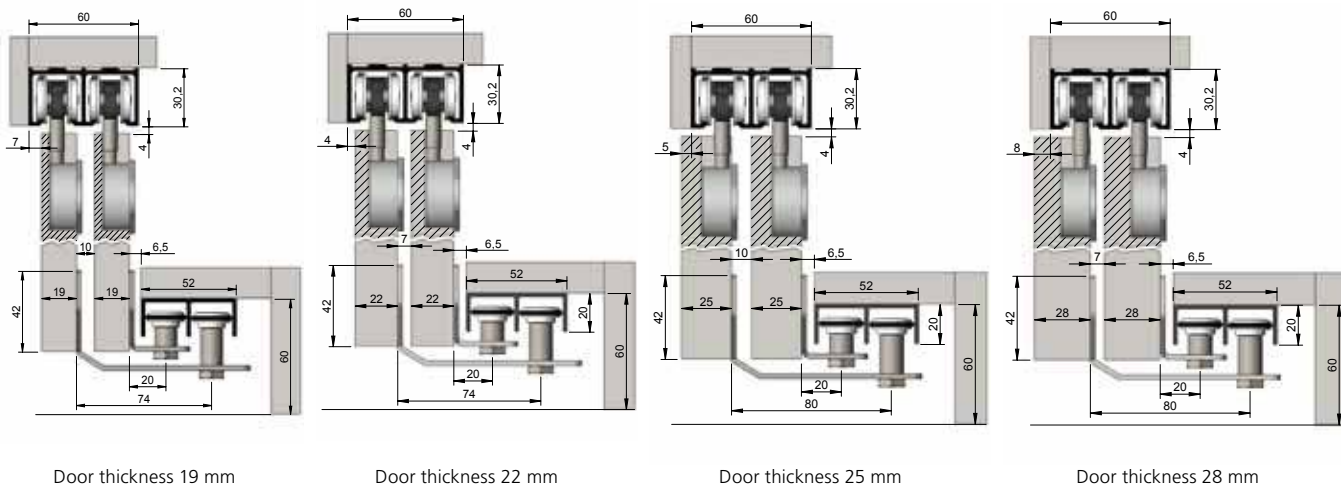
stock length, natural-finished	004010
cut to length, natural-finished	004011



HELM 54

semi-enclosed, up to 50 kg door weight

Double track profile no. 62



Mounting notes:

In case of three-leaf installations the leaf in the middle can generally only be arrested by the door catcher when closed and can only be pushed in one direction.

With every fitting detailed mounting instructions are enclosed that we place at your disposal on request to facilitate the planning.

fig. 1

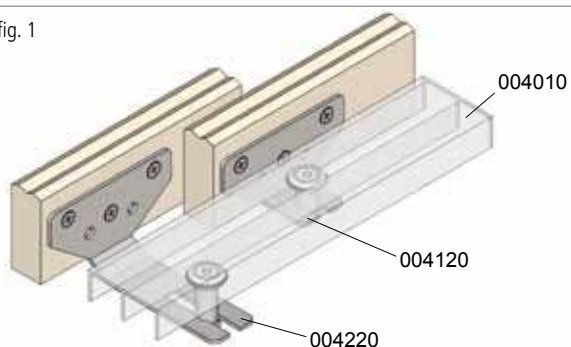
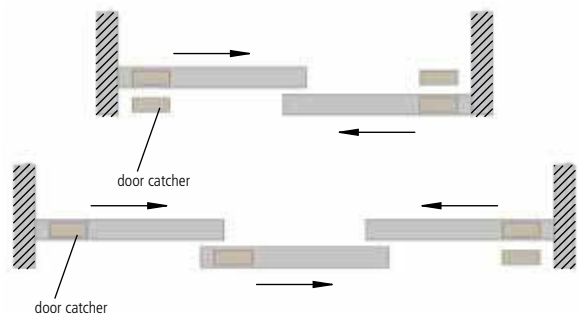


fig. 2



HELM 64

enclosed, up to 80 kg door weight

HELM 64

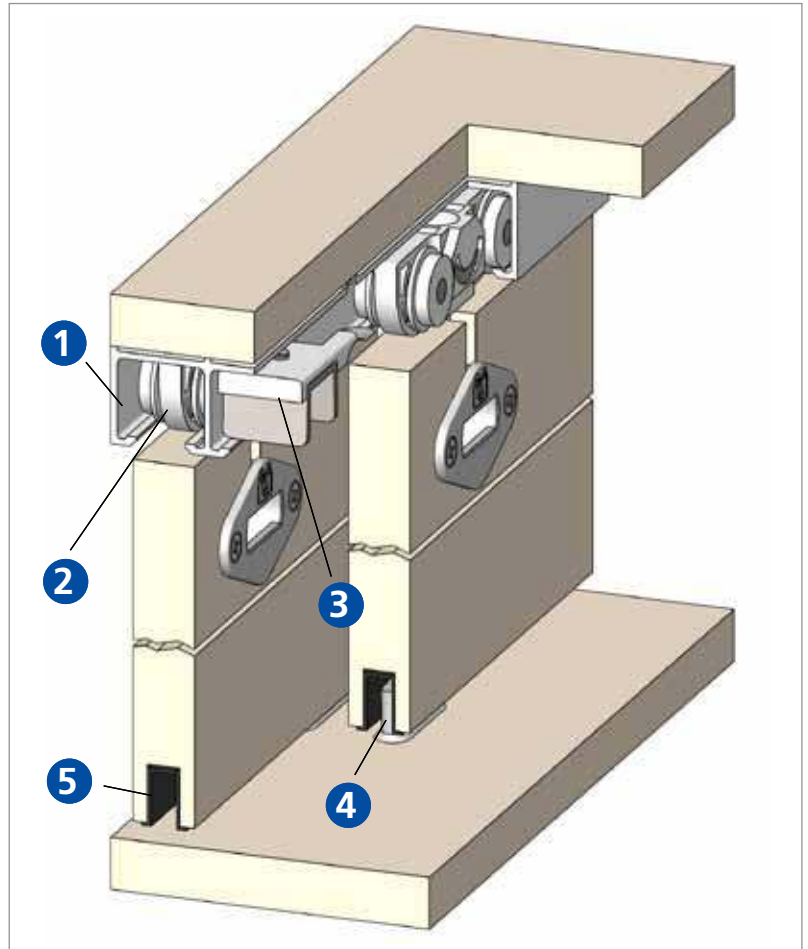
enclosed cabinet doors

Product features

- small track profile
- easy installation
- simple height adjustment
- aluminium track profile
- long-lasting smooth and quiet running due to the use of ball bearings and plastic rollers

A fitting for a double cabinet sliding door includes:

- 1 1 piece double track profile
- 2 4 pieces trolley hangers
- 3 4 pieces door catchers
- 4 2 pieces bottom guides
- 5 2 pieces bottom guide profile



Scope of supply for double and three-leaf installations - for 19, 22, 25 and 28 mm door thickness

Scope of supply for double installations (EDP no. 0064.23), for 19, 22, 25 and 28 mm door thickness

4 x trolley hangers no. 64
4 x door catchers no. 65 P
2 x bottom guide no. 84-14



Scope of supply for three-leaf installations (EDP no. 0064.24), for 19, 22, 25 and 28 mm door thickness

6 x trolley hangers no. 64
4 x door catchers no. 65 P
3 x bottom guide no. 84-14



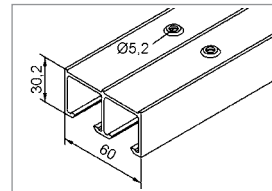
Single components

1 Double track profile no. 62

Aluminium natural-finished, in stock lengths of 6000 mm or cut to size, drilled approx. every 250 mm

Part no.

stock length, natural-finished	006251
cut to length, natural-finished	006252

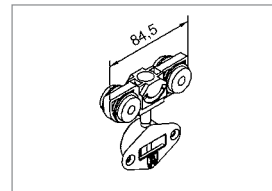


2 Trolley hanger no. 64 with flange

Plastic, double pair, with top flange zinc-plated, with ball bearing

Part no.

plastic	006422
---------	--------

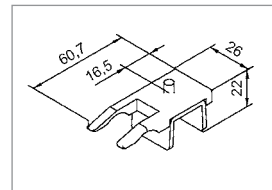


3 Door catcher no. 65 P

Zinc-plated, plastic

Part no.

zinc-plated/plastic	006500
---------------------	--------

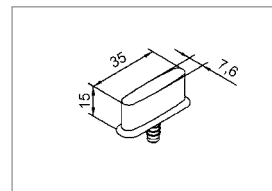


4 Bottom guide no. 84-14

Zinc die-cast

Part no.

zinc die-cast	084100014001
---------------	--------------

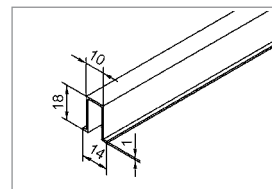


5 Bottom guide profile no. 84

Plastic, in stock lengths of approx. 2500 mm

Part no.

stock length	084090006047
cut to length	084090006048



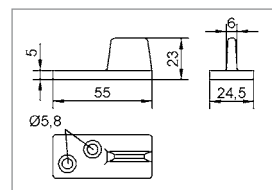
Additional accessories

Bottom guide no. 214

Plastic, white

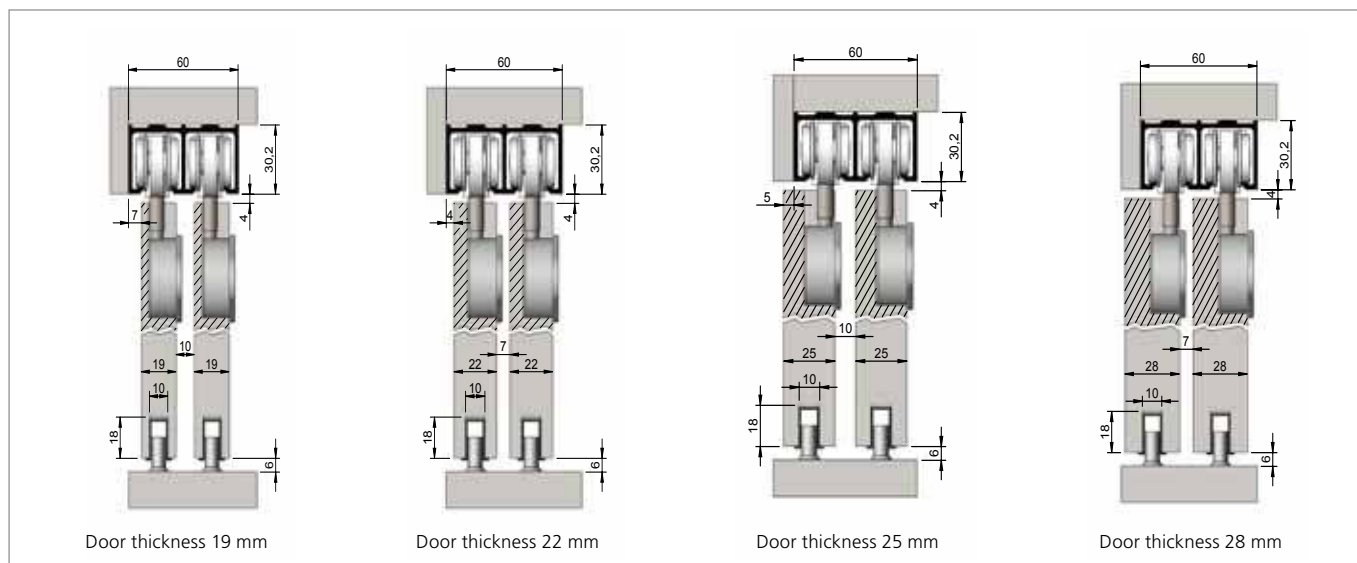
Part no.

plastic	021461
---------	--------



enclosed, up to 80 kg door weight

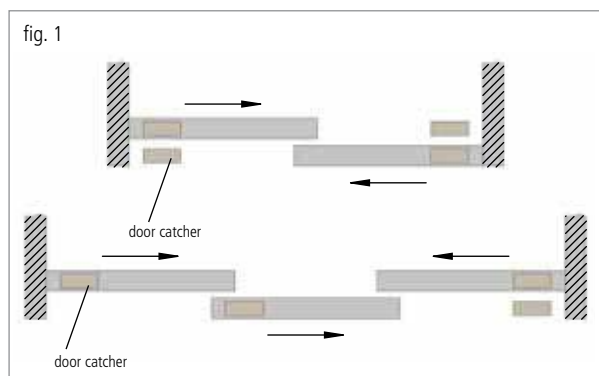
Double track profile no. 62



Mounting notes:

In case of three-leaf installations the leaf in the middle can generally only be arrested by the door catcher when closed and can only be pushed in one direction.

With every fitting detailed mounting instructions are enclosed that we place at your disposal on request to facilitate the planning.



HELM 64

semi-enclosed, up to 80 kg door weight

HELM 64

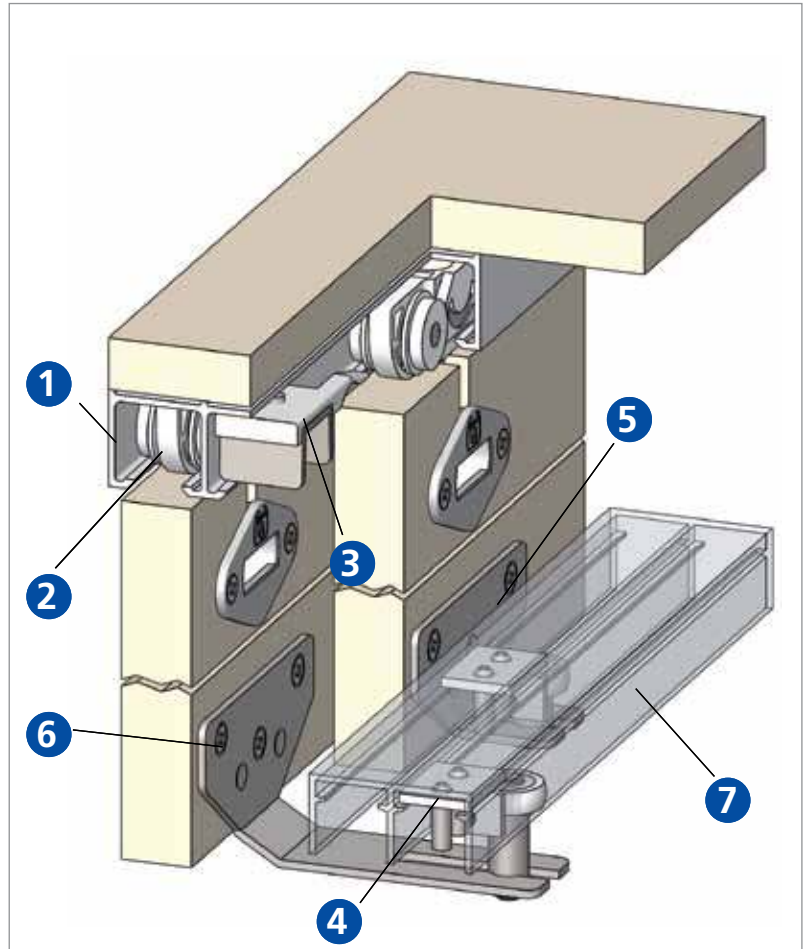
semi-enclosed cabinet doors

Product features

- small track profile
- easy installation
- simple height adjustment
- aluminium track profile
- long-lasting smooth and quiet running due to the use of ball bearings and plastic rollers

A fitting for a double cabinet sliding door includes:

- 1** 1 piece double track profile
- 2** 4 pieces trolley hangers
- 3** 4 pieces door catchers
- 4** 4 pieces track stops
- 5** 2 pieces guide rollers short
- 6** 2 pieces guide rollers long
- 7** 1 piece double bottom guide profile



Scope of supply for double and three-leaf installations - for 19, 22, 25 and 28 mm door thickness

Scope of supply for double installations (EDP no. 006420), for 19, 22, 25 and 28 mm door thickness

4 x trolley hangers no. 64
4 x door catchers no. 65 P
4 x bottom stops no. 84 P
2 x guide rollers no. 84 L
2 x guide rollers no. 84 K

max.
80 kg
Leaf weight

Scope of supply for three-leaf installations (EDP no. 006421), for 19, 22, 25 and 28 mm door thickness

6 x trolley hangers no. 64
4 x door catchers no. 65 P
4 x bottom stops no. 84 P
2 x guide rollers no. 84 L
4 x guide rollers no. 84 K

max.
80 kg
Leaf weight

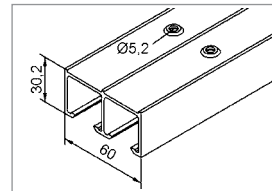
Single components

1 Double track profile no. 62

Aluminium natural-finished, in stock lengths of 6000 mm or cut to size, drilled approx. every 250 mm

Part no.

stock length, natural-finished	006251
cut to length, natural-finished	006252

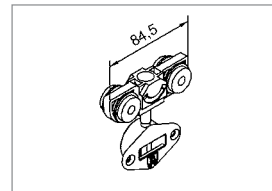


2 Trolley hanger no. 64 with flange

Plastic, double pair, with top flange zinc-electroplated, ball bearing

Part no.

plastic	006422
---------	--------

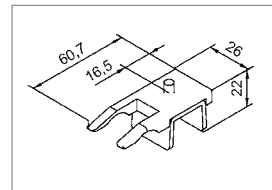


3 Door catcher no. 65 P

Zinc-plated, plastic

Part no.

zinc-plated/plastic	006500
---------------------	--------

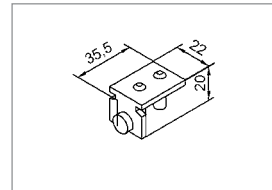


4 Bottom stop no. 84 P left

Aluminium

Part no.

aluminium	084040000001
-----------	--------------

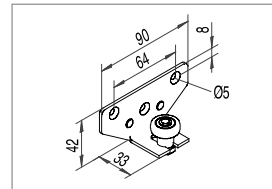


5 Guide roller no. 84 K

Plastic-coated (RAL 9006), with plastic roller (ball bearing mounted)

Part no.

steel, plastic-coated	084100001001
-----------------------	--------------

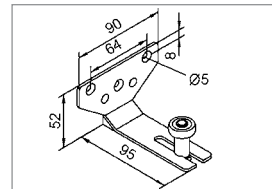


6 Guide roller no. 84 L

Plastic-coated (RAL 9006), with plastic roller (ball bearing mounted)

Part no.

steel, plastic-coated	084100002001
-----------------------	--------------

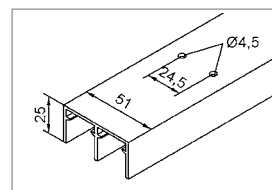


7 Double bottom guide profile no. 84

Aluminium silver colour anodised, in stock lengths of 6000 mm or cut to size drill holes approx. every 200 mm

Part no.

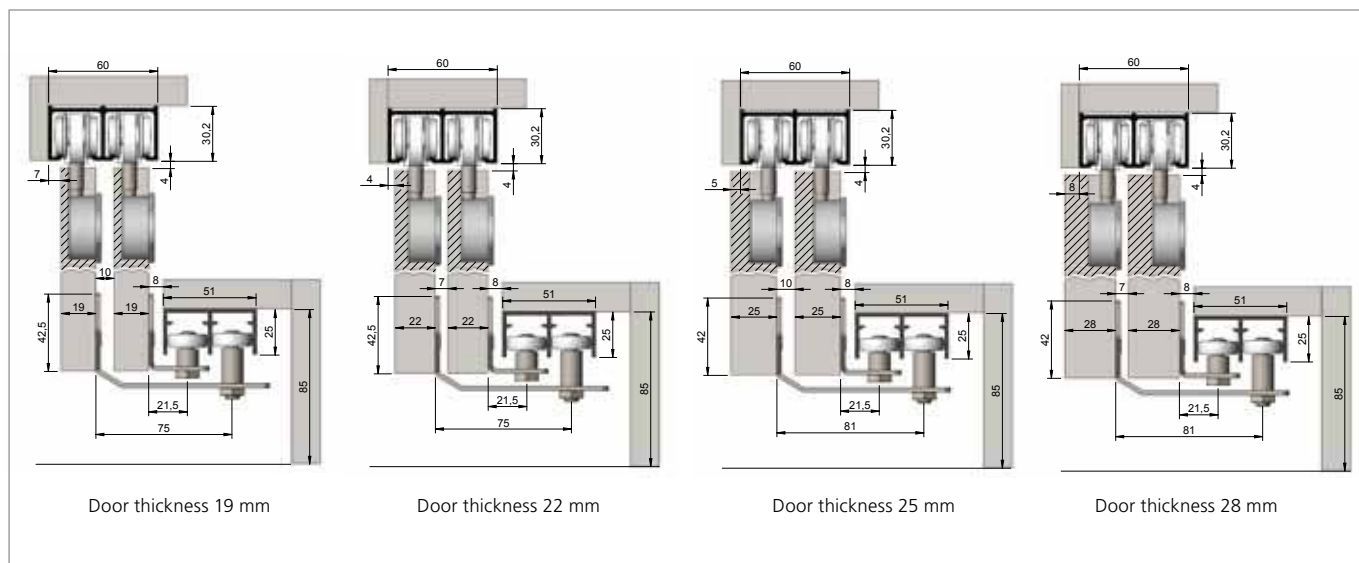
stock length	084090005006
cut to length	084090005010



HELM 64

semi-enclosed, up to 80 kg door weight

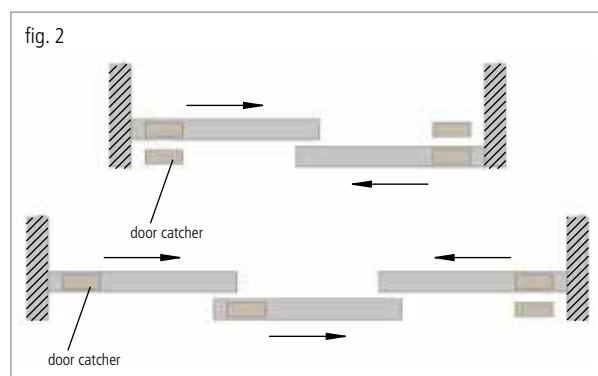
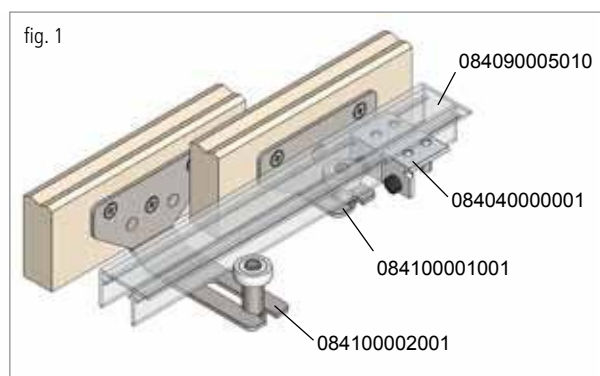
Double track profile no. 62



Mounting notes:

In case of three-leaf installations the leaf in the middle can generally only be arrested by the door catcher when closed and can only be pushed in one direction.

With every fitting detailed mounting instructions are enclosed that we place at your disposal on request to facilitate the planning.



HELM 260

front-mounted, up to 80 kg door weight

HELM 260

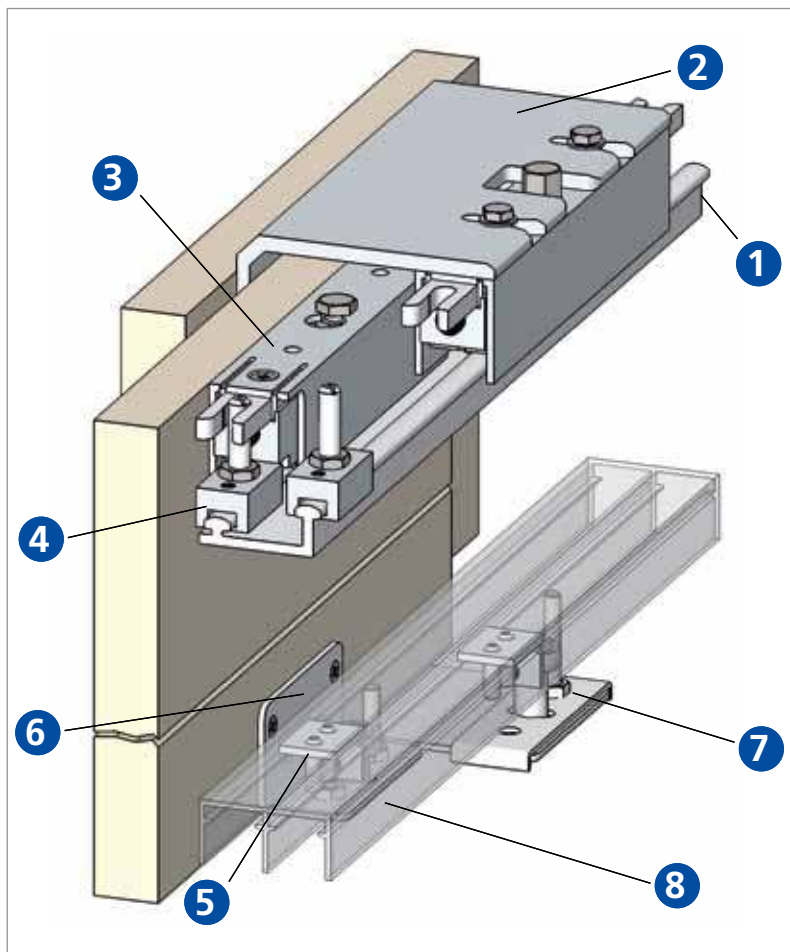
front-mounted cabinet doors

Product features

- small track profile
- easy installation
- simple height adjustment
- aluminium track profile
- long-lasting smooth and quiet running due to the use of ball bearings and plastic rollers

A fitting for a double cabinet sliding door includes:

- 1 piece double track profile
- 2 pieces trolley hangers 260
- 2 pieces trolley hangers 260-91
- 4 pieces track stop 260 P
- 4 pieces track stop 84 P
- 2 pieces guide rollers 260 K
- 2 pieces guide rollers 260 L
- 1 piece double bottom guide profile



Scope of supply for double and three-leaf installations - for 19, 22, 25 and 28 mm door thickness

Scope of supply for double installations (EDP no.260.120000.053), for 19, 22, 25 and 28 mm door thickness

2 x trolley hangers no. 260
2 x trolley hangers no. 260-91
4 x door catchers no. 260 P
4 x bottom stops no. 84 P
2 x guide rollers no. 260 L
2 x guide rollers no. 260 K



scope of supply for three-leaf installations (EDP no. 260.120000.054), for 19, 22, 25 and 28 mm door thickness

2 x trolley hangers no. 260
4 x trolley hangers no. 260-91
4 x door catchers no. 260 P
4 x bottom stops no. 84 P
2 x guide rollers no. 260 L
4 x guide rollers no. 260 K



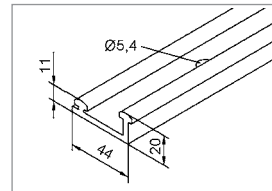
Single components

1 Double track profile no. 260

Aluminium silver colour anodised, in stock lengths of 6000 mm or cut to size, drilled approx. every 200 mm

Part no.

stock length	260020010006
cut to length	260020010010

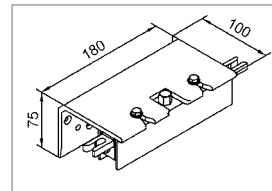


2 Trolley hanger no. 260

Aluminium/steel zinc-plated, with bracket, ball bearing

Part no.

aluminium/steel zinc-plated	260050001001
-----------------------------	--------------

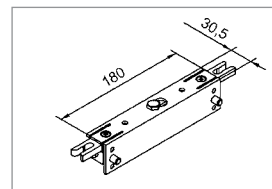


3 Trolley hanger no. 260-91

Aluminium/steel zinc-plated, ball bearing

Part no.

aluminium/steel zinc-plated	260050091001
-----------------------------	--------------

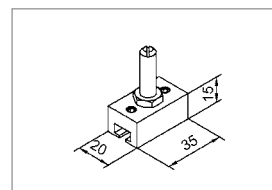


4 Door catcher no. 260 P left

Aluminium

Part no.

aluminium	260040000001
-----------	--------------

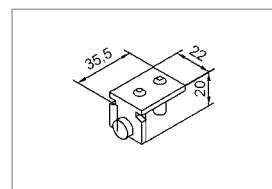


5 Bottom stop no. 84 P left

Aluminium

Part no.

aluminium	084040000001
-----------	--------------

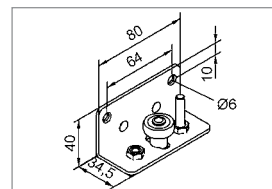


6 Guide roller no. 260 K

Steel, plastic-coated (RAL 9006), with plastic roller (ball bearing mounted)

Part no.

steel, plastic-coated	260100001001
-----------------------	--------------

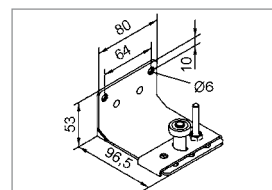


7 Guide roller no. 260 L

Steel, plastic-coated (RAL 9006), with plastic roller (ball bearing mounted)

Part no.

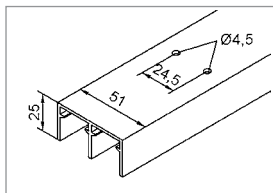
steel, plastic-coated	260100002001
-----------------------	--------------



HELM 260

up to 80 kg door weight

Single components



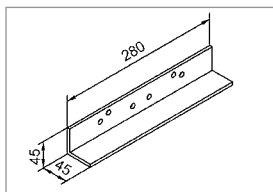
8 Double bottom guide profile no. 84

Aluminium silver colour anodised, in stock lengths of 6000 mm or cut to size, drilled approx. every 200 mm

Part no.

stock length	084090005006
cut to length	084090005010

additional accessories



Hole gauge

Aluminium

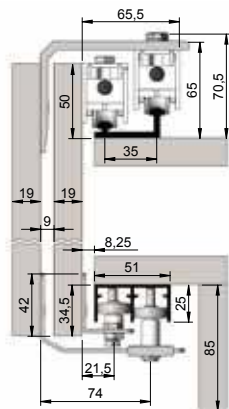
A paper hole gauge is enclosed with the HELM sets.

For series production we recommend to order the depicted hole gauge of aluminium.

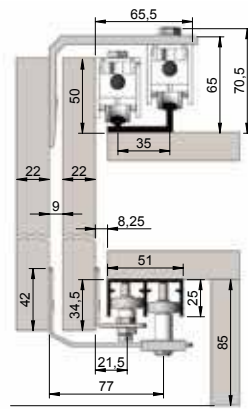
Part no.

aluminium	260110051001
-----------	--------------

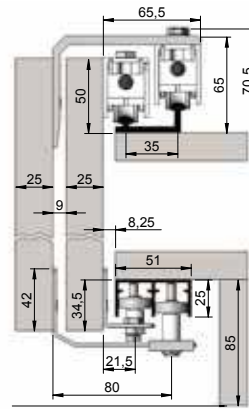
Double track profile no. 260



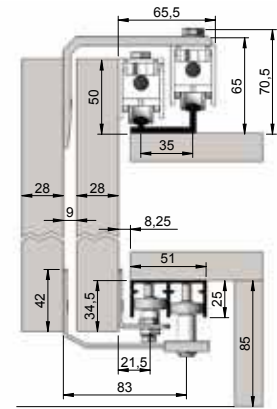
Door thickness 19 mm



Door thickness 22 mm



Door thickness 25 mm



Door thickness 28 mm

Mounting notes:

In case of three-leaf installations the leaf in the middle can generally only be arrested by the door catcher when closed and can only be pushed in one direction.

With every fitting detailed mounting instructions are enclosed that we place at your disposal on request to facilitate the planning.

fig. 1

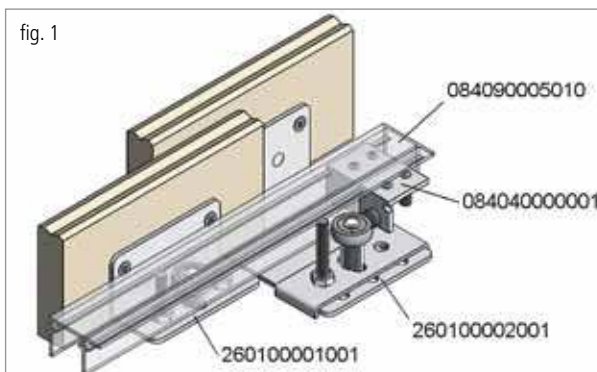
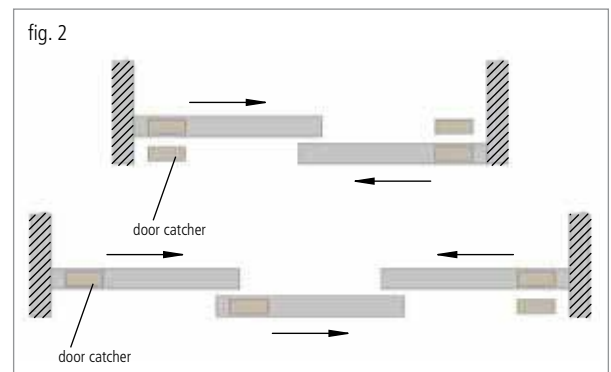


fig. 2



Sample of Request for Proposal

1 set HELM 54

Installation type: semi-enclosed

Number of leaves: 2

Leaf width: 600 mm

Leaf height: 2000 mm

Leaf thickness: 19 mm

Max. door weight: 50 kg

For your enquires or orders we would like to ask you for the following information:

- indication of hardware (no. 25, 28, 54, 64 or 260)
- installation type: enclosed, semi enclosed or front-mounted sliding doors or folding doors
- number of leaves
- leaf dimensions (width, height, thickness)

Information

To facilitate the process, please use the following enquiry form.



Woelm GmbH | Hasselbecker Str. 2-4 | D-42579 Heiligenhaus | Tel.: +49 (0) 20 56 - 18 - 0 | Fax: +49 (0) 20 56 - 18 - 21

Required information

Company _____ Telephone _____

Name _____ Fax _____

Street _____ E-mail _____

Postcode/city _____ Contact person _____

Supply exclusively through specialised trade. Please indicate your specialist dealer if appropriate: _____

Number of required installations _____ ☐ enclosed ☐ semi enclosed ☐ front-mounted

HELM sliding hardware no. _____

number of leaves _____ piece

leaf width _____ mm

leaf height _____ mm

leaf thickness _____ mm

door weight _____ kg

HELM Range

TEH_01	Hardware for Sliding Wardrobe Doors
TEH_02H	Hardware for Sliding Doors (Timber)
TEH_02G	Hardware for Sliding Doors (Glass)
TEH_02D	Design Hardware for Sliding Doors (Timber and Glass)
TEH_06	Hardware for Sliding Gates
TEH_09	Hardware for Gateway Gates
TEH_11	Hardware for Curtains and Tarpaulins
TEH_12	Safety Equipment against Falls from a Height (PSE)
TEH_40	Hardware for Sliding Shutters



KWS Range

TEK_0102	Door Holders and Door Stops
TEK_0308	Pull Handles, Door Handles and Accessories
TEK_0506	Flush Handles and Locks
TEK_0407	Hardware for Handrails, Floor Rails, Coat Racks and Toilet Partition Walls



Code with link to download the catalog TEH_01

The technical specifications are up-to-date. We reserve the right to make modifications with regard to design and styling which serve the purpose of technical improvement. We appreciate your understanding that we assume no liability for any typing errors or any other errors. The reproduction of this document, in extracts or complete, is not permitted without our express written permission.

Part no.: TEH_01/03.2016

This brochure supersedes all previous brochures.

Woelm GmbH

Hasselbecker Str. 2-4
D - 42579 Heiligenhaus
Tel.: + 49 (0) 20 56 - 18 - 0
Fax: + 49 (0) 20 56 - 18 - 21
www.woelm.de
contact@woelm.de

Woelm Austria GmbH

Seewalchen 5a
A - 5201 Seekirchen
Tel.: + 43 (0) 62 12 - 25 02
Fax: + 43 (0) 62 12 - 69 95
www.woelm.at
contact@woelm.at