

Flush Pulls and Locks



Catalogue: TEK_0506

Information

Introduction	Page 3
Technical Specifications	Page 4

KWS Flush Pulls

Product overview	Page 6
KWS flush ring pulls	Page 8
KWS flush pulls	Page 19
KWS pulls	Page 26

KWS Locks and Special Hardware

Product overview	Page 29
KWS locks	Page 30
KWS latches and gearboxes	Page 34
KWS pivot hinges	Page 37
KWS door stops	Page 39

KWS Accessories

Accessories	Page 40
-------------	---------

Appendix

Numbers chart	Page 42
Finishes chart	Page 43





KWS Flush Pulls and Locks

When nothing may protrude from the face of the door you should resort to flush pulls by KWS, such as for gyms, lifts or folding doors. You use KWS flush pulls as a simple, inside handle or with ring, folding handle or knob like a door handle.

KWS flush pulls are available in zinc-plated steel, stainless steel, aluminium or polished brass. You will find further information as well as technical specifications on the following pages.

Furthermore, you will find in this catalogue lever locks and special hardware for many varied applications (from p. 28).

Technical notes

Whether flush pull, flush ring pull or gym fitting, it is always about using a door without employing protruding hardware parts. The reason for this is basically a lack of space or the avoidance of injury risks, e. g. in case of sliding doors, lift doors, garage doors or also gym doors. Flush pulls can basically be categorised as follows:

- 1. Flush pull as a pure handle**
- 2. Flush pull with folding ring or folding handle for lock operation**

You will find relevant product samples on the following pages.

When selecting the right flush pull the question whether a cylinder cut-out is to be made is also of importance. This is mainly the case when using flush ring pulls and gym fittings.

Available cut-outs are: profile cylinder, single tumbler and Kaba.

Things to be taken into account when mounting flush pulls:

Please make sure that there is sufficient depth for flush mounting and that the hole sizes correspond to the catalogue drawings. We refer again to the product-related recommendations for mounting.

Flush pulls ..

as a pure handle

**Flush pulls ..**

by means of folding ring or handle





Page 8



Page 9



Page 10



Page 10



Page 11



Page 12



Page 13



Page 14



Page 15



Page 16



Page 17



Page 17



Page 18



Page 19



Page 20



Page 21



Page 21



Page 22



Page 22



Page 23



Page 23



Page 24



Page 24



Page 25



Page 26



Page 26



Page 27



Page 27



5001..

70 x 200 with 8 mm female part

5002..

70 x 200 with 8 mm spindle part

5101..

70 x 200 with 7 mm female part

5102..

70 x 200 with 7 mm spindle part

Ring handle fixed pivoting,
spindle of spindle part
permanently riveted

Cut-out:
without cut-out or with cut-out,
e. g. profile cylinder, single
tumbler, KABA, smallest distance
for profile cylinder cut-out =
55 mm
biggest distance for profile
cylinder cut-out = 92 mm

Note

**You need sufficient depth for
flush mounting.**

The rotary handle **5047..** can also
be used instead of the flush ring
pull or **5048..** can be used.

Standard design

steel/aluminium

Recessed grip of steel with ring of aluminium

silver stove enamelled	.02
black stove enamelled	.03
dark brown stove enamelled	.10
coloured plastic-coated	.70

aluminium machined according to E 5

Recessed grip of aluminium with ring

of aluminium	
KWS 1 silver anodised	.31
KWS 2 nickel silver anodised	.32
KWS 3 gold anodised	.33
brushed stainless steel effect anodised	.35
KWS 5 dark bronze anodised	.37

brass

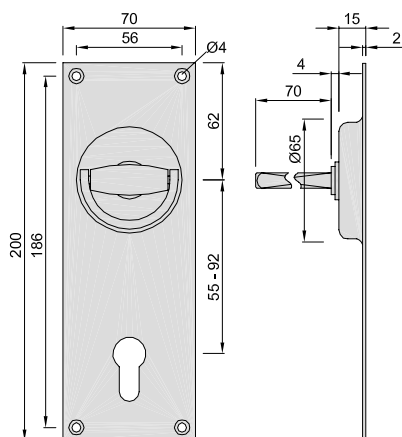
Recessed grip of brass with ring of brass

brushed and lacquered	.62
polished and lacquered	.66

packaging unit female part	5 pieces
spindle part	2 pieces

Piece weight

steel/aluminium	0.110 kg
aluminium	0.300 kg
brass	0.250 kg



Order example

Piece	Part no.	Finish no.	Cut-out	Distance
... Piece	5001	.02	profile cylinder	72 mm

Standard design**steel/aluminium****Recessed grip of steel with ring
of aluminium**

silver stove enamelled	.02
black stove enamelled	.03
dark brown stove enamelled	.10
coloured plastic-coated	.70

aluminium machined according to E 5**Recessed grip of aluminium with ring
of aluminium**

KWS 1 silver anodised	.31
KWS 2 nickel silver anodised	.32
KWS 3 gold anodised	.33
brushed stainless steel effect anodised	.35
KWS 5 dark bronze anodised	.37

brass**Recessed grip of brass with ring****of brass**

brushed and lacquered	.62
polished and lacquered	.66

stainless steel**Recessed grip of stainless steel with ring****of stainless steel****not for 5010.. and 5011..**

brushed	.82
polished	.83

packaging unit female part	5 pieces
spindle part	2 pieces

Piece weight

steel/aluminium	0.380 kg
aluminium	0.150 kg
brass	0.480 kg
stainless steel	0.430 kg

**5004..**

100 x 200 with 8 mm female part

5005..

100 x 200 with 8 mm spindle part

5007..

100 x 200 with 9 mm female part

5008..

100 x 200 with 9 mm spindle part

5010..

100 x 200 with 10 mm female part

5011..

100 x 200 with 10 mm spindle part

5104..

100 x 200 with 7 mm female part

5105..

100 x 200 with 7 mm spindle part

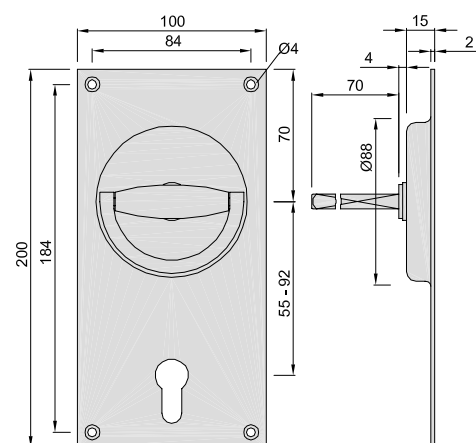
Ring handle fixed pivoting,
spindle of spindle part
permanently riveted

Cut-out:
without cut-out or with cut-out,
e. g. profile cylinder, single
tumbler, KABA, smallest distance
for profile cylinder cut-out =
55 mm
biggest distance for profile
cylinder cut-out = 92 mm

Note

**You need sufficient depth for
flush mounting.**

The flush ring pulls **5007..** and
5008.. are available under **5907..**
or **5908..** completely of steel or
with the finish **.06** (zinc-electro-
plated).

**Order example**

Piece	Part no.	Finish no.	Cut-out	Distance
... Piece	5004	.02	profile cylinder	92 mm



5013..

70 x 70 with 8 mm female part

5014..

70 x 70 with 8 mm spindle part

5113..

70 x 70 with 7 mm female part

5114..

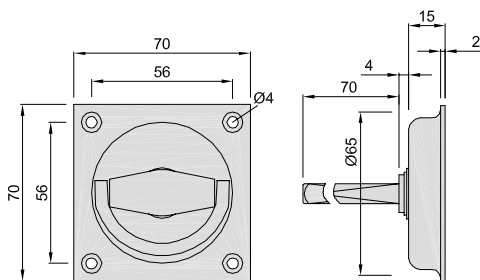
70 x 70 with 7 mm spindle part

Ring handle fixed pivoting,
spindle of spindle part permanently riveted

Note

You need sufficient depth for flush mounting.

with rubber tongue see 5054..
Instead of the ring handle also the rotary handle can be employed 5047.. or 5048.. can be used.



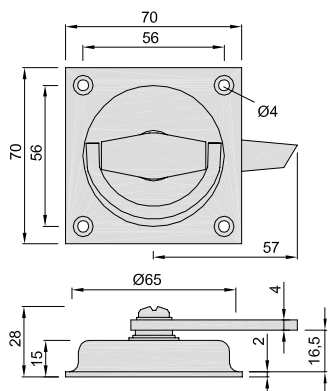
5054..

70 x 70 with 8 mm with throw over latch

ring pull fixed pivoting
90 x 90 mm see 5051..

Note

You need sufficient depth for flush mounting.



Standard design

steel/aluminium

Recessed grip of steel with ring of aluminium

silver stove enamelled	.02
black stove enamelled	.03
dark brown stove enamelled	.10
coloured plastic-coated	.70

aluminium machined according to E 5

Recessed grip of aluminium with ring of aluminium

KWS 1 silver anodised	.31
KWS 2 nickel silver anodised	.32
KWS 3 gold anodised	.33
brushed stainless steel effect anodised	.35
KWS 5 dark bronze anodised	.37

brass

Recessed grip of brass with ring of brass

brushed and lacquered	.62
polished and lacquered	.66

packaging unit female part	10 pieces
spindle part	5 pieces

Piece weight

steel/aluminium	0.120 kg
aluminium	0.060 kg
brass	0.170 kg

Standard design

steel/aluminium

Recessed grip of steel with ring of aluminium

silver stove enamelled	.02
black stove enamelled	.03
dark brown stove enamelled	.10
coloured plastic-coated	.70

aluminium machined according to E 5

Recessed grip of aluminium with ring of aluminium

KWS 1 silver anodised	.31
KWS 2 nickel silver anodised	.32
KWS 3 gold anodised	.33
brushed stainless steel effect anodised	.35
KWS 5 dark bronze anodised	.37

brass

Recessed grip of brass with ring of brass

brushed and lacquered	.62
polished and lacquered	.66

unit	10 pieces
------	-----------

Piece weight

steel/aluminium	0.120 kg
aluminium	0.060 kg
brass	0.170 kg

Standard design**steel/aluminium****Recessed grip of steel with ring
of aluminium**

silver stove enamelled	.02
black stove enamelled	.03
dark brown stove enamelled	.10
coloured plastic-coated	.70

aluminium machined according to E 5**Recessed grip of aluminium with ring
of aluminium**

KWS 1 silver anodised	.31
KWS 2 nickel silver anodised	.32
KWS 3 gold anodised	.33
brushed stainless steel effect anodised	.35
KWS 5 dark bronze anodised	.37

brass**Recessed grip of brass with ring****of brass**

brushed and lacquered	.62
polished and lacquered	.66

stainless steel**Recessed grip of stainless steel with ring
of stainless steel****not for 5022.. and 5023..**

brushed	.82
polished	.83

packaging unit female part	8 pieces
spindle part	5 pieces

Piece weight

steel/aluminium	0.200 kg
aluminium	0.090 kg
brass	0.280 kg
stainless steel	0.250 kg



Ring handle fixed pivoting,
spindle of spindle part permanently riveted

with throw over latch see **5051..**

The flush ring pulls **5019..** and **5020..** are
available under **5919..** or **5920..** made
completely of steel or with the finish **.06**
(zinc-electroplated).

Note

**You need sufficient depth for flush
mounting.**

**5016..**

90 x 90 with 8 mm female part

5017..

90 x 90 with 8 mm spindle part

5019..

90 x 90 with 9 mm female part

5020..

90 x 90 with 9 mm spindle part

5022..

90 x 90 with 10 mm female part

5023..

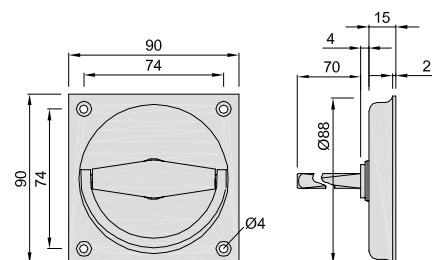
90 x 90 with 10 mm spindle part

5116..

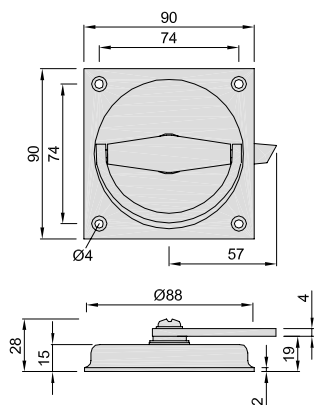
90 x 90 with 7 mm female part

5117..

90 x 90 with 7 mm spindle part

**Order example**

Piece	Part no.	Finish no.
... Piece	5016	.31



5051..

90 x 90 with throw over latch

ring pull fixed pivoting
70 x 70 mm see [5054..](#)

Note
You need sufficient depth for flush mounting.

Standard design

steel/aluminium

Recessed grip of steel with ring of aluminium

silver stove enamelled	.02
black stove enamelled	.03
dark brown stove enamelled	.10
coloured plastic-coated	.70

aluminium machined according to E 5

Recessed grip of aluminium with ring of aluminium

KWS 1 silver anodised	.31
KWS 2 nickel silver anodised	.32
KWS 3 gold anodised	.33
brushed stainless steel effect anodised	.35
KWS 5 dark bronze anodised	.37

brass

Recessed grip of brass with ring of brass

brushed and lacquered	.62
polished and lacquered	.66

stainless steel

Recessed grip of stainless steel with ring of stainless steel

brushed	.82
polished	.83

unit	5 pieces
------	----------

Piece weight

steel/aluminium	0.230 kg
aluminium	0.120 kg
brass	0.310 kg
stainless steel	0.280 kg



Order example

Piece	Part no.	Finish no.
... Piece	5051	.02

Standard design**steel/aluminium****Recessed grip of steel with ring
of aluminium**

silver stove enamelled	.02
black stove enamelled	.03
dark brown stove enamelled	.10
coloured plastic-coated	.70

aluminium machined according to E 5**Recessed grip of aluminium with ring
of aluminium**

KWS 1 silver anodised	.31
KWS 2 nickel silver anodised	.32
KWS 3 gold anodised	.33
brushed stainless steel effect anodised	.35
KWS 5 dark bronze anodised	.37

brass**Recessed grip of brass with ring**

of brass	
brushed and lacquered	.62
polished and lacquered	.66

stainless steel**Recessed grip of stainless steel with ring
of stainless steel**

not for 5031.. and 5032..	
brushed	.82
polished	.83

packaging unit female part	7 pieces
spindle part	4 pieces

Piece weight

steel/aluminium	0.230 kg
aluminium	0.100 kg
brass	0.310 kg
stainless steel	0.280 kg



Ring handle fixed pivoting,
spindle of spindle part permanently riveted

The flush ring pulls **5028..** and **5029..** are
available under **5928..** or **5929..** completely
of steel or with the finish **.06** (zinc-electro-
plated).

Note

**You need sufficient depth for flush
mounting.**

**5025..**

100 x 100 with 8 mm female part

5026..

100 x 100 with 8 mm spindle part

5028..

100 x 100 with 9 mm female part

5029..

100 x 100 with 9 mm spindle part

5031..

100 x 100 with 10 mm female part

5032..

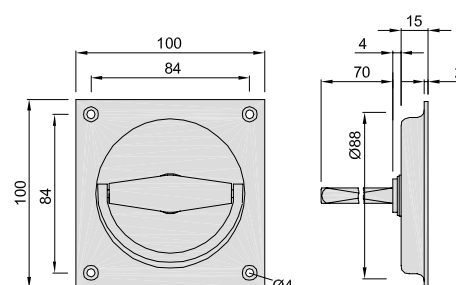
100 x 100 with 10 mm spindle part

5125..

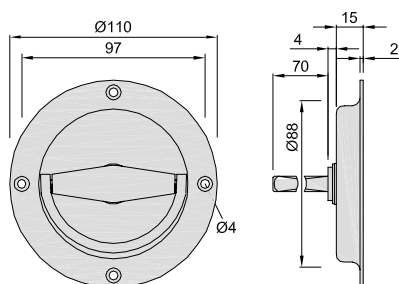
100 x 100 with 7 mm female part

5126..

100 x 100 with 7 mm spindle part

**Order example**

Piece	Part no.	Finish no.
... Piece	5025	.03



5034..

Ø110 with 8 mm female part

5035..

Ø110 with 8 mm spindle part

5037..

Ø110 with 9 mm female part

5038..

Ø110 with 9 mm spindle part

5040

Ø110 with 10 mm female part

5041..

Ø110 with 10 mm spindle part

5134..

Ø110 with 7 mm female part

5135..

Ø110 with 7 mm spindle part

Standard design

steel/aluminium

Recessed grip of steel with ring of aluminium

silver stove enamelled	.02
black stove enamelled	.03
dark brown stove enamelled	.10
coloured plastic-coated	.70

aluminium machined according to E 5

Recessed grip of aluminium with ring of aluminium

KWS 1 silver anodised	.31
KWS 2 nickel silver anodised	.32
KWS 3 gold anodised	.33
brushed stainless steel effect anodised	.35
KWS 5 dark bronze anodised	.37

brass

Recessed grip of brass with ring of brass

brushed and lacquered	.62
polished and lacquered	.66

stainless steel

Recessed grip of stainless steel with ring of stainless steel

not for 5040.. and 5041..

brushed	.82
polished	.83

packaging unit female part	5 pieces
spindle part	4 pieces

Piece weight

steel/aluminium	0.210 kg
aluminium	0.100 kg
brass	0.290 kg
stainless steel	0.260 kg



Ring handle fixed pivoting, spindle of spindle part permanently riveted

The flush ring pulls **5037..** and **5038..** are available under **5937..** or **5938..** completely of steel or with the finish **.06** (zinc-electro-plated).

Note

You need sufficient depth for flush mounting.

Order example

Piece	Part no.	Finish no.
... Piece	5034	.02

**Standard design****steel/aluminium****Recessed grip of steel with ring****of aluminium**

silver stove enamelled	.02
black stove enamelled	.03
dark brown stove enamelled	.10
coloured plastic-coated	.70

aluminium machined according to E 5**Recessed grip of aluminium with ring****of aluminium**

KWS 1 silver anodised	.31
KWS 2 nickel silver anodised	.32
KWS 3 gold anodised	.33
brushed stainless steel effect anodised	.35
KWS 5 dark bronze anodised	.37

packaging unit female part	10 pieces
spindle part	5 pieces

Piece weight

steel/aluminium	0.120 kg
aluminium	0.060 kg

5047..

70 x 70 with 8 mm female part

5048..

70 x 70 with 8 mm spindle part

5147..

70 x 70 with 7 mm female part

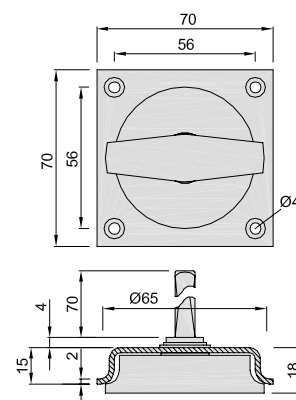
5148..

70 x 70 with 7 mm spindle part

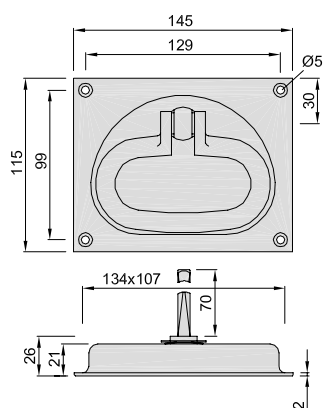
Rotary handle fixed pivoting,
spindle of spindle part permanently riveted

Note

You need sufficient depth for flush mounting.

**Order example**

Piece	Part no.	Finish no.
... Piece	5047	.02



5043..

145 x 115 with 8 mm female part

5044..

145 x 115 with 8 mm spindle part

5045..

145 x 115 with 9 mm female part

5046..

145 x 115 with 9 mm spindle part

Ring handle fixed pivoting,
spindle of spindle part permanently riveted.

This flush ring pull cannot be
used in pairs or in combination
with a door handle or knob.

Note

**You need sufficient depth for
flush mounting.**

Standard design

steel/aluminium

Recessed grip of steel with ring

of aluminium

silver stove enamelled	.02
black stove enamelled	.03
dark brown stove enamelled	.10
coloured plastic-coated	.70

aluminium machined according to E 5

Recessed grip of aluminium with ring

of aluminium

KWS 1 silver anodised	.31
KWS 2 nickel silver anodised	.32
KWS 3 gold anodised	.33
brushed stainless steel effect anodised	.35
KWS 5 dark bronze anodised	.37

packaging unit female part	8 pieces
spindle part	4 pieces

Piece weight

steel/aluminium	0.440 kg
aluminium	0.230 kg

Order example

Piece	Part no.	Finish no.
... Piece	5043	.02

**Standard design****steel/aluminium****Recessed grip of steel with ring****of aluminium**

silver stove enamelled	.02
black stove enamelled	.03
dark brown stove enamelled	.10
coloured plastic-coated	.70

aluminium machined according to E 5**Recessed grip of aluminium with ring****of aluminium**

KWS 1 silver anodised	.31
KWS 2 nickel silver anodised	.32
KWS 3 gold anodised	.33
brushed stainless steel effect anodised	.35
KWS 5 dark bronze anodised	.37

unit	2 pieces
------	----------

Piece weight

steel/aluminium	0.586 kg
aluminium	0.300 kg

Ring handle fixed pivoting,
spindle of spindle part permanently riveted.

This flush ring pull cannot be used in pairs or
in combination with a door handle or knob.

Note

**You need sufficient depth for flush
mounting.**

Order example

Piece	Part no.	Finish no.	Cut-out	Distance
... Piece	5164	.02	profile cylinder	92

5160..

145 x 165 with 8 mm female part

5161..

145 x 165 with 8 mm spindle part

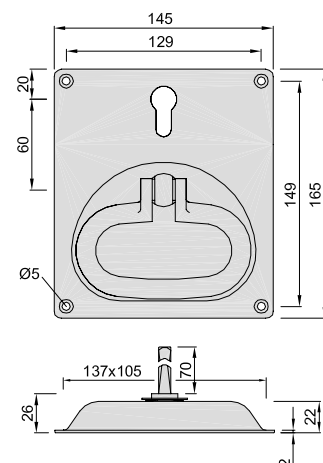
5162..

145 x 165 with 9 mm female part

5163..

145 x 165 with 9 mm spindle part

Cut-out
without cut-out or 60 mm
profile cylinder with cut-out

**5164..**

145 x 165 with 8 mm female part

5165..

145 x 165 with 8 mm spindle part

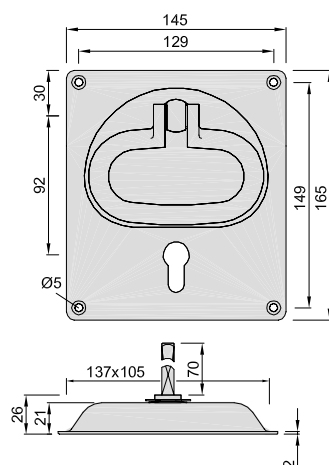
5166..

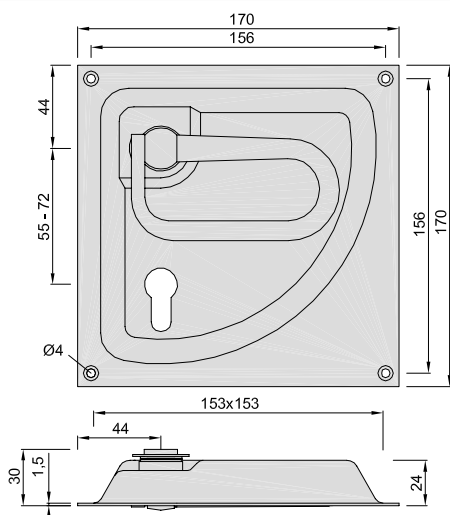
145 x 165 with 9 mm female part

5167..

145 x 165 with 9 mm spindle part

Cut-out
without cut-out or 92 mm
profile cylinder with cut-out





5055..

170 x 170 with 8 mm female part

5056..

170 x 170 with 8 mm spindle part

5058..

170 x 170 with 9 mm female part

5059..

170 x 170 with 9 mm spindle part

with flush-mounted,
fixed pivoting ring handle,
spindle of spindle part perma-
nently riveted

Cut-out
without cut-out or with cut-out,
e. g. profile cylinder, single tum-
bler, KABA, smallest distance for
profile cylinder cut-out = 55 mm
biggest distance for profile cylin-
der cut-out = 72 mm

This door fitting is available in
a similar design of stainless steel:
see [5061..](#) [5062..](#) and [5064..](#)
[5065..](#)

Note

**You need sufficient depth for
flush mounting.**

Fig. depicts right door fitting.

Standard design

steel/aluminium

Recessed grip of steel with ring

of aluminium

silver stove enamelled	.02
black stove enamelled	.03
dark brown stove enamelled	.10
coloured plastic-coated	.70

aluminium machined according to E 5

Recessed grip of aluminium with ring

of aluminium

KWS 1 silver anodised	.31
KWS 2 nickel silver anodised	.32
KWS 3 gold anodised	.33
brushed stainless steel effect anodised	.35
KWS 5 dark bronze anodised	.37

unit	2 pieces
------	----------

Piece weight

steel/aluminium	0.440 kg
aluminium	0.230 kg

Order example

Piece	Part no.	Finish no.	Cut-out	Distance	right/left
... Piece	5055	.02	profile cylinder	72	R

**Standard design****steel/aluminium****Recessed grip of steel with handle****of aluminium**

silver stove enamelled	.02
black stove enamelled	.03
dark brown stove enamelled	.10
coloured plastic-coated	.70

aluminium machined according to E 5**Recessed grip of aluminium with handle****of aluminium**

KWS 1 silver anodised	.31
KWS 2 nickel silver anodised	.32
KWS 3 gold anodised	.33
brushed stainless steel effect anodised	.35
KWS 5 dark bronze anodised	.37

stainless steel**Recessed grip of stainless steel with handle****of stainless steel (see drawing below)**

brushed	.82
polished	.83

unit	2 pieces
------	----------

Piece weight

steel/aluminium	0.480 kg
aluminium	0.220 kg
stainless steel	0.550 kg

5061..

170 x 170 with 8 mm female part

5062..

170 x 170 with 8 mm spindle part

5064..

170 x 170 with 9 mm female part

5065..

170 x 170 with 9 mm spindle part

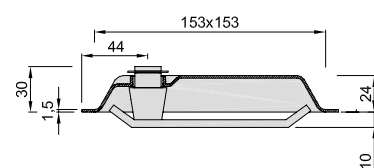
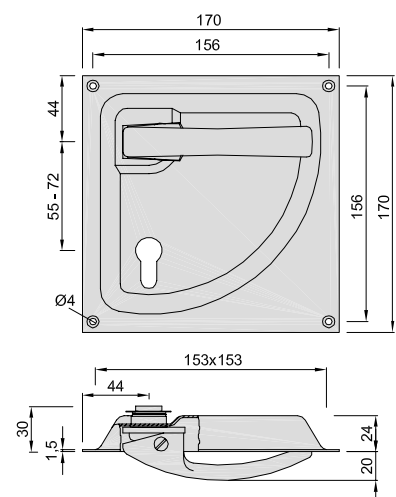
with flush-mounted, fixed pivoting handle, spindle of spindle part permanently riveted

Cut-out without cut-out or with cut-out, e. g. profile cylinder, single tumbler, KABA, smallest distance for profile cylinder cut-out = 55 mm biggest distance for profile cylinder cut-out = 72 mm

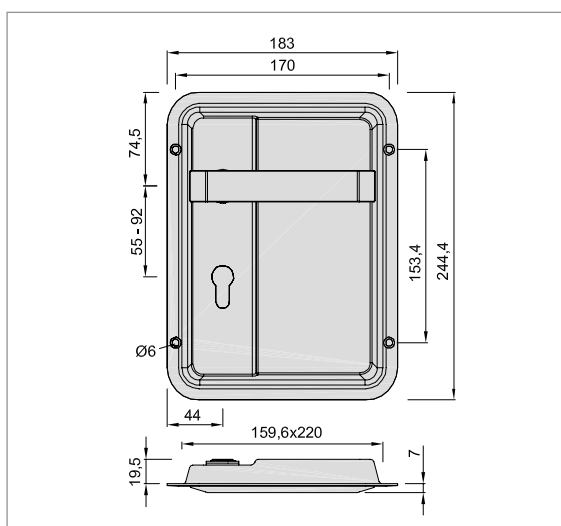
Note

You need sufficient depth for flush mounting.

Fig. depicts right door fitting.

**Order example**

Piece	Part no.	Finish no.	Cut-out	Distance	right/left
... Piece	5061	.82	profile cylinder	72	L



5072..

183 x 244 with 8 mm female part

5073..

183 x 244 with 8 mm spindle part

5074..

183 x 244 with 9 mm female part

5075..

183 x 244 with 9 mm spindle part

with flush-mounted,
fixed pivoting handle,
spindle of spindle part bolted

Cut-out
without cut-out or with cut-out,
e. g. profile cylinder, KABA
smallest distance = 55 mm
biggest distance = 92 mm

More variations as well as instal-
lation drawings on request.

Note

**You need sufficient depth for
flush mounting.**

Fig. depicts right door fitting.

Standard design

stainless steel

Recessed grip of stainless steel
with handle

of stainless steel

brushed

.82

unit

2 pieces

Piece weight

stainless steel

0.550 kg



Order example

Piece	Part no.	Finish no.	Cut-out	Distance	right/left
... Piece	5072	.82	profile cylinder	72	R

Standard design**steel/aluminium****back plate of steel**

silver stove enamelled	.02
black stove enamelled	.03
dark brown stove enamelled	.10
coloured plastic-coated	.70

aluminium machined according to E 5**back plate of aluminium**

KWS 1 silver anodised	.31
KWS 2 nickel silver anodised	.32
KWS 3 gold anodised	.33
brushed stainless steel effect anodised	.35
KWS 5 dark bronze anodised	.37

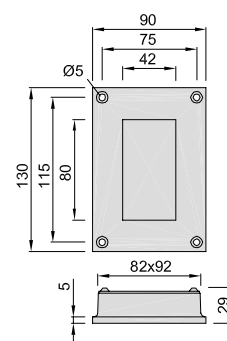
unit	8 pieces
------	----------

Piece weight

steel/aluminium	0.290 kg
-----------------	----------

5201..

90 x 130 mm

Note*You need sufficient depth for flush mounting.***Standard design****steel/aluminium****back plate of steel**

silver stove enamelled	.02
black stove enamelled	.03
dark brown stove enamelled	.10
coloured plastic-coated	.70

aluminium machined according to E 5**back plate of aluminium**

KWS 1 silver anodised	.31
KWS 2 nickel silver anodised	.32
KWS 3 gold anodised	.33
brushed stainless steel effect anodised	.35
KWS 5 dark bronze anodised	.37

Packaging unit 5202.. / 5203..	10 / 5 pieces
---------------------------------------	---------------

Piece weight

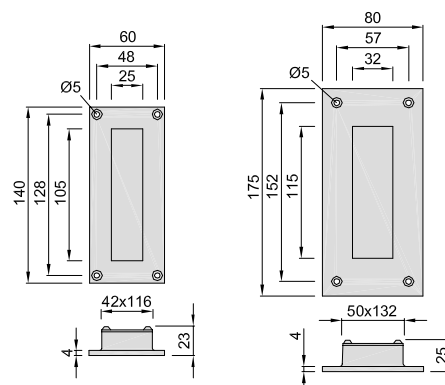
steel/aluminium 5202..	0.180 kg
steel/aluminium 5203..	0.260 kg

5202..

60 x 140 mm

5203..

80 x 175 mm

Note*You need sufficient depth for flush mounting.***Order example**

Piece	Part no.	Finish no.
... Piece	5201	.02

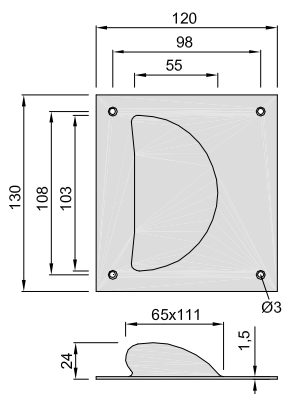


5205..

120 x 130 mm

Note

You need sufficient depth for flush mounting.



Standard design

steel

silver stove enamelled	.02
black stove enamelled	.03
electro-galvanised	.06
dark brown stove enamelled	.10
coloured plastic-coated	.70

aluminium machined according to E 5

KWS 1 silver anodised	.31
KWS 2 nickel silver anodised	.32
KWS 3 gold anodised	.33
brushed stainless steel effect anodised	.35
KWS 5 dark bronze anodised	.37

stainless steel

brushed	.82
polished	.83

unit	10 pieces
------	-----------

Piece weight

steel	0.210 kg
aluminium	0.070 kg
stainless steel	0.210 kg

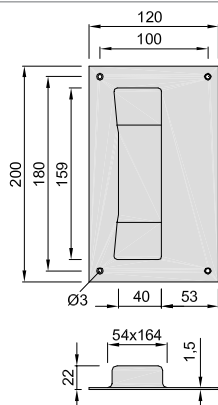


5206..

120 x 200 mm

Note

You need sufficient depth for flush mounting.



Standard design

steel

silver stove enamelled	.02
black stove enamelled	.03
electro-galvanised	.06
dark brown stove enamelled	.10
coloured plastic-coated	.70

aluminium machined according to E 5

KWS 1 silver anodised	.31
KWS 2 nickel silver anodised	.32
KWS 3 gold anodised	.33
brushed stainless steel effect anodised	.35
KWS 5 dark bronze anodised	.37

stainless steel

brushed	.82
polished	.83

unit	10 pieces
------	-----------

Piece weight

steel	0.330 kg
aluminium	0.100 kg
stainless steel	0.330 kg

Order example

Piece	Part no.	Finish no.
... Piece	5205	.02

Standard design**steel**

silver stove enamelled	.02
black stove enamelled	.03
electro-galvanised	.06
dark brown stove enamelled	.10
coloured plastic-coated	.70

aluminium machined according to E 5

KWS 1 silver anodised	.31
KWS 2 nickel silver anodised	.32
KWS 3 gold anodised	.33
brushed stainless steel effect anodised	.35
KWS 5 dark bronze anodised	.37

stainless steel

brushed	.82
polished	.83

unit 10 pieces

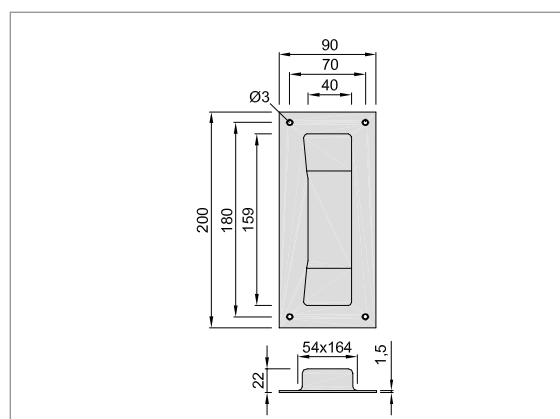
Piece weight

steel	0.260 kg
aluminium	0.080 kg
stainless steel	0.260 kg

5207..

90 x 200 mm

Note
You need sufficient depth for flush mounting.

**Standard design****steel**

silver stove enamelled	.02
black stove enamelled	.03
electro-galvanised	.06
dark brown stove enamelled	.10
coloured plastic-coated	.70

aluminium machined according to E 5

KWS 1 silver anodised	.31
KWS 2 nickel silver anodised	.32
KWS 3 gold anodised	.33
brushed stainless steel effect anodised	.35
KWS 5 dark bronze anodised	.37

stainless steel

brushed	.82
polished	.83

unit 10 pieces

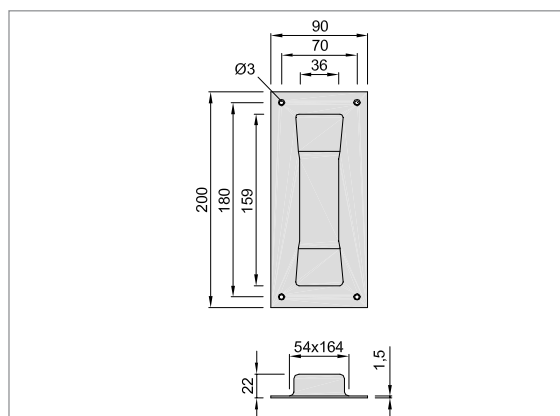
Piece weight

steel	0.260 kg
aluminium	0.080 kg
stainless steel	0.260 kg

5208..

90 x 200 mm

Note
You need sufficient depth for flush mounting.

**Order example**

Piece	Part no.	Finish no.
... Piece	5207	.02



5250..

Ø 65 mm sliding door flush pull for glass doors 8 - 12 mm

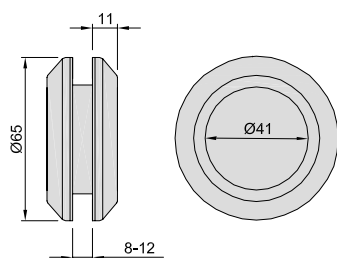
outer rings of aluminium,
brass or stainless steel
inner part of aluminium anodised



Mounting

Bore diameter of glass door =
Ø 50 mm

Insert inner part and twist the
two outer rings with plastic discs
firmly against each other.



Standard design

aluminium machined according to E 6

KWS 1 silver anodised	.41
KWS 2 nickel silver anodised	.42

brass

brushed and lacquered	.62
polished and lacquered	.66

stainless steel

brushed	.82
polished	.83

unit	1 piece
------	---------

Piece weight

aluminium	0.095 kg
brass	0.220 kg
stainless steel	0.200 kg



5251..

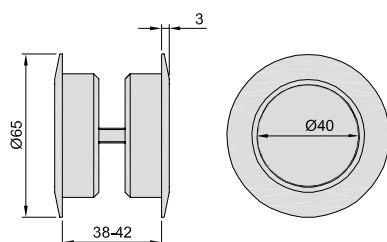
Ø 65 mm sliding door flush pull
for doors 38 - 42 mm
More door thicknesses from
32 mm on request



Mounting

Bore diameter of wood door =
Ø 50 mm

Insert one flush part, tighten
counterpart with grub screw.



Standard design

aluminium machined according to E 6

KWS 1 silver anodised	.41
KWS 2 nickel silver anodised	.42

stainless steel

brushed	.82
polished	.83

unit	1 piece
------	---------

Piece weight

aluminium	0.140 kg
brass	0.400 kg
stainless steel	0.405 kg

Order example

Piece	Part no.	Finish no.
... Piece	5250	.41

Standard design**stainless steel**

brushed .82

unit 1 piece

Piece weight

stainless steel 0.333 kg

5260..

65 x 65 mm

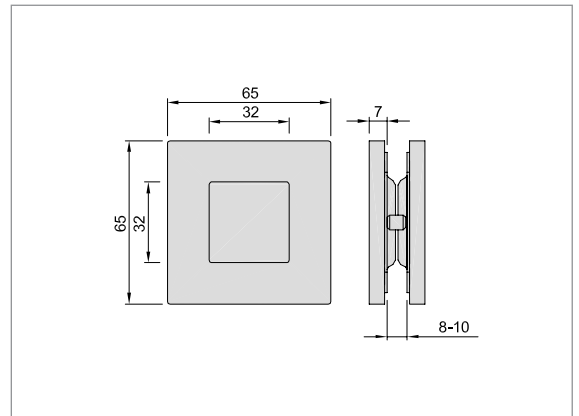
sliding door flush pull for glass doors 8 - 10 mm

4 x adhesive strips

**Mounting**

Bore diameter of glass door = Ø 50 mm

1. Mount flush female part:
Remove foil from adhesive strips, align flush part angularly, stick it on with the bore hole in the centre and press it on firmly. (For aligning the flush part we recommend an angle gauge or auxiliary lines. Once fixed the flush part should not be removed again.)
2. Mount flush spindle part:
Remove foil from the adhesive strips and stick the flush part on neatly and free of grease (aligned by the guide pins).
3. Press on both flush parts firmly, especially on the adhesive strips.
4. **The adhesive strips have to be left alone to harden for 24 hours.**

**Order example**

Piece	Part no.	Finish no.
... Piece	5260	.82



5303..

A	B	C	D	E
140	126	13	25	29

5304..

160	145	16	31	35
-----	-----	----	----	----

5305..

180	160	18	34	38
-----	-----	----	----	----

5306..

200	180	19	35	42
-----	-----	----	----	----

5307..

230	210	20	37	47
-----	-----	----	----	----

Standard design

cast iron

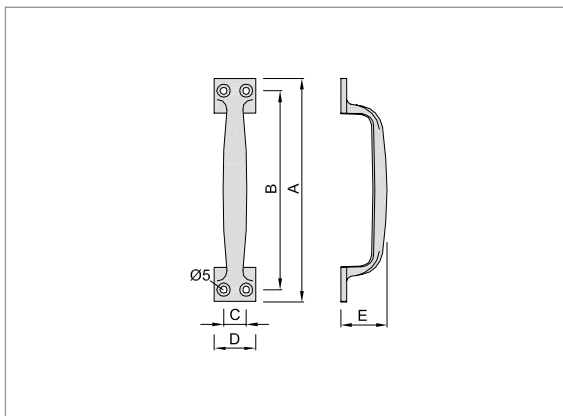
silver stove enamelled	.02
black stove enamelled	.03

packaging unit
5303.. 5304.. 5305.. 5306.. 10 pieces

packaging unit 5307.. 5 pieces

Piece weight

cast iron 5303..	0.090 kg
5304..	0.170 kg
5305..	0.240 kg
5306..	0.300 kg
5307..	0.400 kg



light version

of grey iron casting with flush countersunk screw holes



5309..

A	B	C	D	E
180	159	25	43	56

5310..

200	175	25	44	57
-----	-----	----	----	----

5311..

235	210	30	49	56
-----	-----	----	----	----

Standard design

cast iron

silver stove enamelled	.02
black stove enamelled	.03

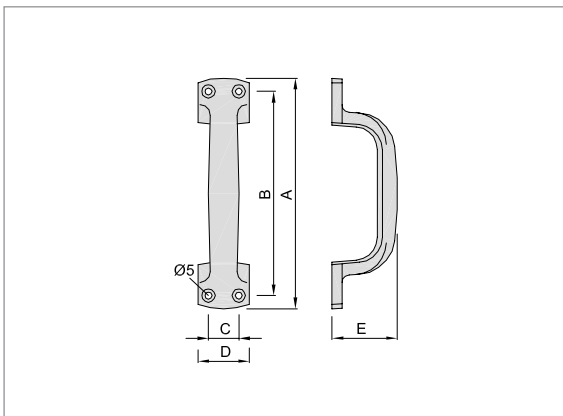
unit 5 pieces

Piece weight

cast iron 5309..	0.490 kg
5310..	0.550 kg
5311..	0.680 kg

heavy version

of grey iron casting with flush countersunk screw holes



Order example

Piece	Part no.	Finish no.
... Piece	5303	.02

Standard design**aluminium**coloured plastic-coated **.70****aluminium machined according to E 5**KWS 1 silver anodised **.31**KWS 2 nickel silver anodised **.32**KWS 3 gold anodised **.33**KWS 5 dark bronze anodised **.37**

unit 10 pieces

Piece weightaluminium **5312..** 0.080 kg**5313..** 0.090 kg**5314..** 0.110 kg**5312..**

A	B	C	D	E
140	125	15	30	44

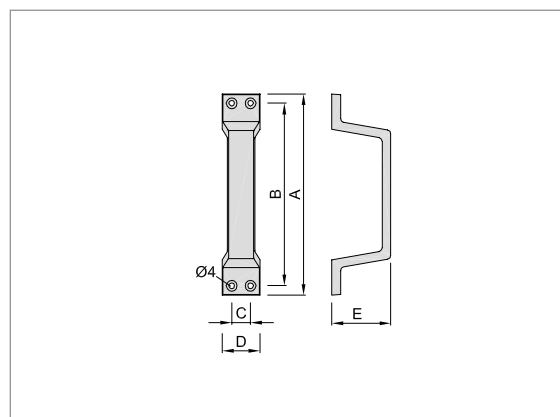
5313..

160	145	15	30	47
-----	-----	----	----	----

5314..

180	165	15	30	50
-----	-----	----	----	----

of aluminium casting with flush-countersunk screw holes

**Standard design****aluminium**coloured plastic-coated **.70****aluminium machined according to E 5**KWS 1 silver anodised **.31**KWS 2 nickel silver anodised **.32**KWS 3 gold anodised **.33**KWS 5 dark bronze anodised **.37**

unit 10 pieces

Piece weightaluminium **5315..** 0.080 kg**5316..** 0.090 kg**5317..** 0.110 kg**5315..**

A	B	C	D	E
140	125	15	30	44

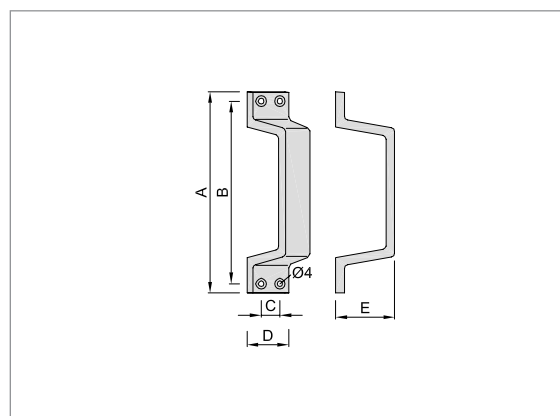
5316..

160	145	15	30	47
-----	-----	----	----	----

5317..

180	165	15	30	50
-----	-----	----	----	----

of aluminium casting with flush-countersunk screw holes offset

**Order example**

Piece	Part no.	Finish no.
... Piece	5312	.31





Page 30



Page 31



Page 32



Page 32



Page 33



Page 34



Page 35



Page 36



Page 37



Page 37



Page 38



Page 39



Page 39



Page 40



Page 40



Page 40



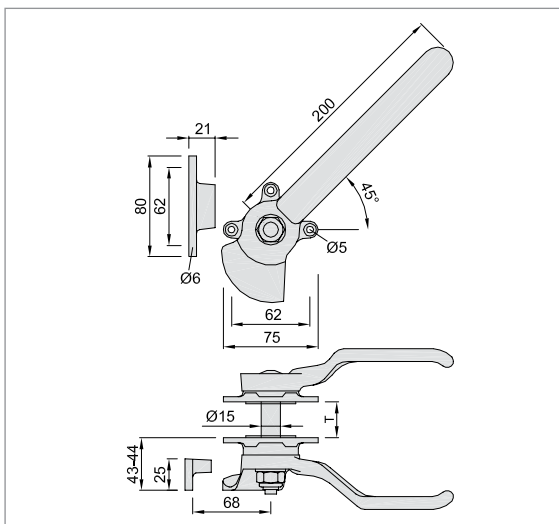
Page 40



Page 40



Page 40



6001..

T = door thickness

25 - 30 mm

6002..

30 - 35 mm

6003..

35 - 40 mm

6004..

40 - 45 mm

6005..

45 - 50 mm

6006..

50 - 55 mm

6007..

55 - 60 mm

6008..

60 - 65 mm

6009..

65 - 70 mm

Standard design

malleable cast iron

silver stove enamelled	.02
hot galvanised	.07

unit	1 piece
------	---------

Piece weight

malleable cast iron	1.340 kg
---------------------	----------

for two-sided door operation
of malleable cast iron with centre spindle
of steel, with clamp, pressure spring,
felt gasketing

other door thicknesses on request

Mounting

Bore a hole into the door for the spindle according to the dimensions of the below drawing, screw on the fixing rosettes with the shimmed felt gasketing in such a way that two screw holes each align with the centre hole horizontally or vertically, put through the spindle part and tighten the female part with laid-on pressure spring with a lock nut.

Fix the clamp in the relevant position in the door frame.

The actuation path of the lever is at 45°. The lock should be installed in such a way that the lever faces diagonally upwards at 45° in the open position.

Fig. depicts lock for left door

Order example

Piece	Part no.	Finish no.	right/left
... Piece	6001	.02	L

**Standard design****steel**

electro-galvanised	.06
--------------------	-----

stainless steel

brushed	.82
---------	-----

polished	.83
----------	-----

unit	1 piece
------	---------

Piece weight

steel	1.230 kg
-------	----------

stainless steel	1.180 kg
-----------------	----------

for two-sided door operation
of steel or stainless steel,
with lock plate, pressure spring,
felt gasketing

Other door thicknesses on request

Mounting

Bore a hole into the door for the spindle according to the dimensions of the below drawing, screw on the fixing rosettes with the shimmed felt gasketing in such a way that two screw holes each align with the centre hole horizontally or vertically, put through the spindle part and tighten the female part with laid-on pressure spring with a lock nut.

Fix the lock plate in the relevant position in the door frame.

The actuation path of the lever is at 90°. The lock should be installed in such a way that the lever faces upwards in the open position.

usable for right and left.

Order example

Piece	Part no.	Finish no.
... Piece	6101	.06

6101..**T = door thickness**

25 - 30 mm

6102..

30 - 35 mm

6103..

35 - 40 mm

6104..

40 - 45 mm

6105..

45 - 50 mm

6106..

50 - 55 mm

6107..

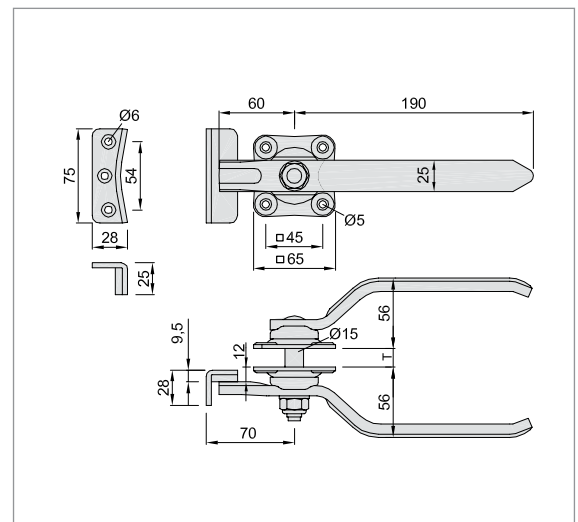
55 - 60 mm

6108..

60 - 65 mm

6109..

65 - 70 mm

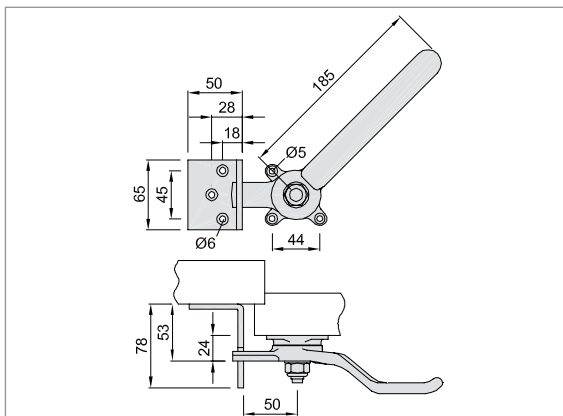




6028..

with angled strike plate
for one-sided door operation,
of malleable cast iron,
angled strike plate of steel

Fig. depicts lock for right door



Standard design

malleable cast iron

silver stove enamelled	.02
hot galvanised	.07

unit	1 piece
------	---------

Piece weight

malleable cast iron	0.810 kg
---------------------	----------

Mounting

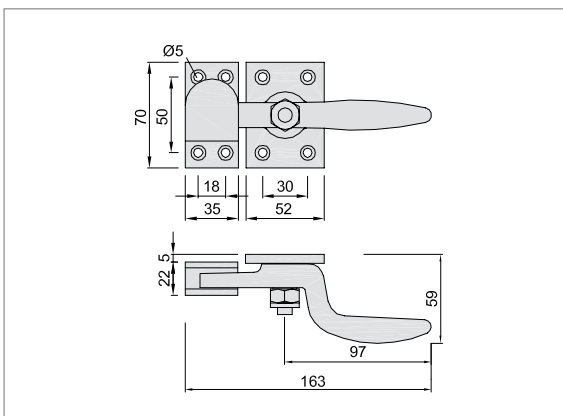
The lock is screwed on according to the dimensions of the drawing shown here and the strike plate fixed in the relevant position. The lock should be installed in such a way that the lever is level in the open position. The actuation path of the lever is at 45°.

Fig. depicts lock for right door



6029..

locking lever of malleable cast
iron on base plate of steel,
clamp of steel



Standard design

malleable cast iron

silver stove enamelled	.02
hot galvanised	.07

unit	5 pieces
------	----------

Piece weight

malleable cast iron	0.610 kg
---------------------	----------

Order example

Piece	Part no.	Finish no.	right/left
... Piece	6028	.02	R

**Standard design****steel**

electro-galvanised	.06
--------------------	-----

stainless steel

brushed	.82
---------	-----

polished	.83
----------	-----

unit	1 piece
------	---------

Piece weight

steel	6128..	0.700 kg
-------	--------	----------

	6129..	0.770 kg
--	--------	----------

stainless steel	6128..	0.680 kg
-----------------	--------	----------

	6129..	0.750 kg
--	--------	----------

for one-sided door operation
of steel or stainless steel

Mounting

The lock is screwed on according to the dimensions of the drawing shown here and the strike plate welded or screwed on in the relevant position. The lock should be mounted in such away that the lever is level when in closed position and facing downwards when in open position. The actuation path of the lever is at 90°.

Note

6128..: usable for right and left

6129..: when ordering please indicate
right or left

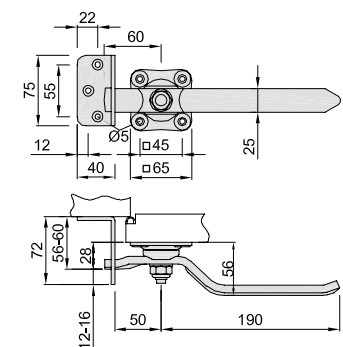
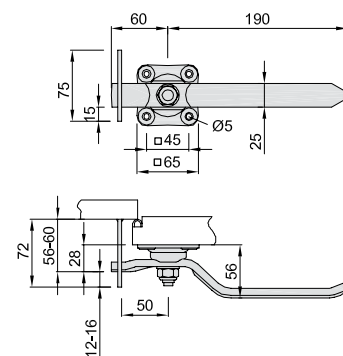
Fig. depicts lock for right door

6128..

with strike plate for welding on
usable for right and left

6129..

with angled strike plate for
screwing on

**Order example**

Piece	Part no.	Finish no.	right/left
... Piece	6128	.06	R



6791..

L

580

6792..

up to 700

6793..

up to 800

6794..

up to 900

6795..

up to 1000

6796..

up to 1100

6797..

up to 1200

with lockable gear box

for 2-leaf fire and smoke control doors type T 30-2
T 120-2

Other bolt lengths:
T 60-2 38 mm, T 90-2 48 mm,
T 120-2 56 mm.

Scope of supply:

- 1x latch
- 1x gear box with fixed pivoting handle
- 1x mounting plate for gear box
- 1x retainer plate for receiving the latch
- 2x countersunk screws M5x16 DIN 963-4.8
- 2x rounded countersunk screws M5x30 DIN 964-4.8



Standard design

latch steel, zinc-electroplated

handle and gear box of steel, zinc-electroplated	.06
--	------------

Handle (with steel core insert) and additional gear box protective cover of aluminium machined according to E4 - KWS 1 silver anodised, gear box of steel, zinc-electroplated	.22
---	------------

handle and gear box of steel, coloured plastic-coated	.70
---	------------

handle and additional gear box protective cover of stainless steel brushed, gear box of steel, zinc-electroplated	.82
---	------------

handle and additional gear box protective cover of stainless steel polished, gear box of steel, zinc-electroplated	.83
--	------------

unit	1 piece
------	---------

Piece weight

steel	1.930 kg
-------	----------

aluminium	2.030 kg
-----------	----------

stainless steel	2.110 kg
-----------------	----------

Mounting

The retainer plate and the strike plate for the gear box according to dimension L are to be welded on the reception tube that was incorporated when manufacturing the door. The latch is pushed into the reception tube and fixed with two screws on the door leaf top edge.

The gear box is screwed on the mounting plate through the door plate with two screws with the handle facing vertically upwards. Two cams fitted on the back of the gear box for stability reasons are to be inserted into the door plate.

Note

The tappet for actuating the latch protrudes at the gear box for door type T 30-2 26 mm. If not indicated otherwise, we take this generally for granted when supplying.

Dimension L is the length from top edge latch forend to centre pivot point of the gear box handle. This results in the fact that the dimension always amounts to 100 mm less than the total length.

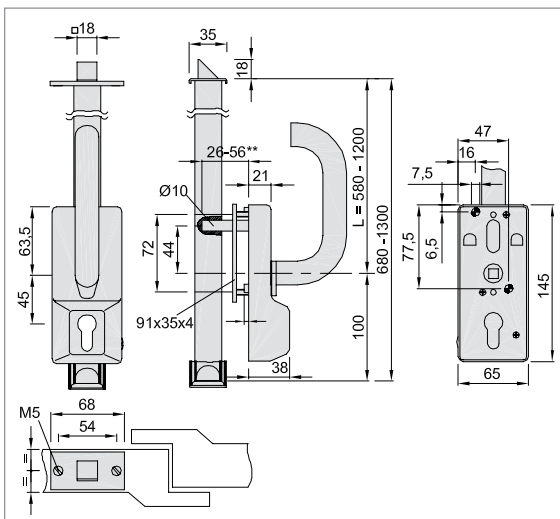
The gear box can be exchanged for already mounted, non-lockable gear boxes.

For locking a standard profile half cylinder is required which is not included in the scope of supply. The cylinder prevents the actuation of the handle.

Tested and approved by Staatl. Materialprüfungsamt North Rhine-Westfalia, Dortmund (Material Testing Institute). We are pleased to place a copy of the test report (P-120002485) at your disposal on request.

Order example

Piece	Part no.	Finish no.	L	Type
... Piece	6791	.06	580	T 30-2





Standard design

handle and gear box of steel, zinc-electroplated .06

Handle (with steel core insert) and additional gear box protective cover of aluminium machined according to E4 - KWS 1 silver anodised, gear box of steel, zinc-electroplated .22

handle and gear box of steel, coloured plastic-coated .70

handle and additional gear box protective cover of stainless steel brushed, gear box of steel, zinc-electroplated .82

handle and additional gear box protective cover of stainless steel polished, gear box of steel, zinc-electroplated .83

unit 1 piece

Piece weight

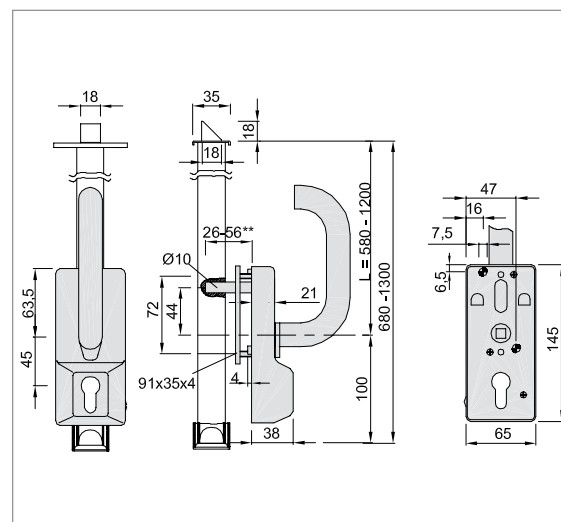
steel	0.810 kg
aluminium	0.910 kg
stainless steel	0.990 kg

6693..

gear box with fixed pivoting handle, lockable

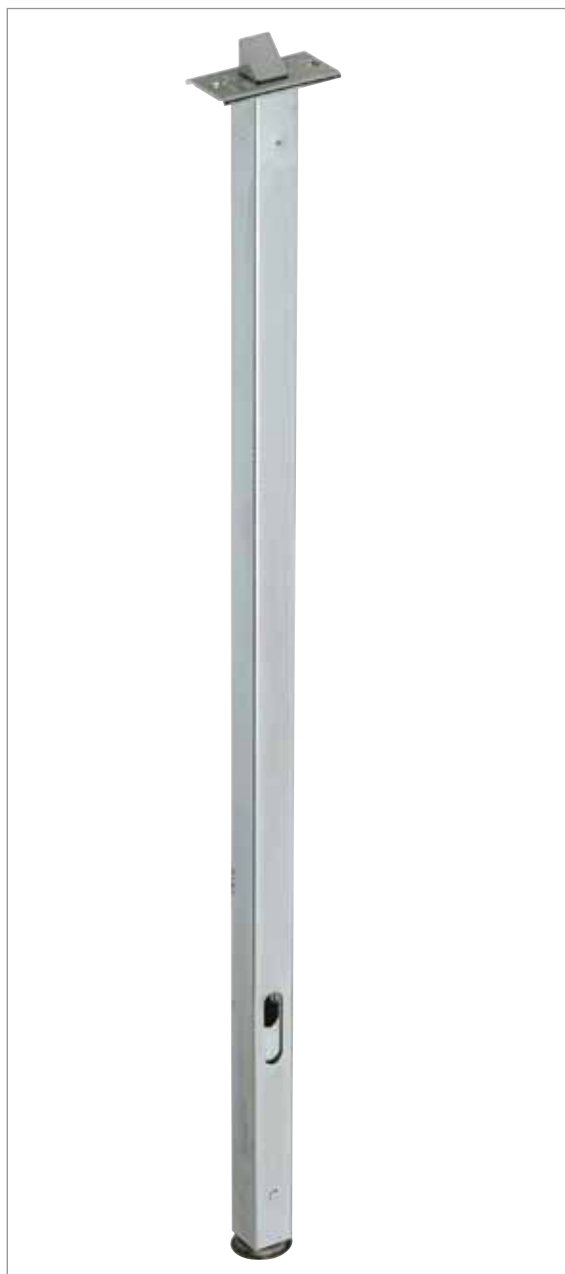
For locking a standard profile half cylinder is required which is not included in the scope of supply. The cylinder prevents the actuation of the handle.

Tested and approved, in combination 6591.. to 6597.. by Staatl. Materialprüfungsamt North Rhine-Westfalia, Dortmund (Material Testing Institute). We are pleased to place a copy of the test report (P-120002485) at your disposal on request.



Order example

Piece	Part no.	Finish no.	Type
... Piece	6693	.82	T 30-2



6591..

L

580

6592..

up to 700

6593..

up to 800

6594..

up to 900

6595..

up to 1000

6596..

up to 1100

6597..

up to 1200

Standard design

steel

electro-galvanised

.06

unit

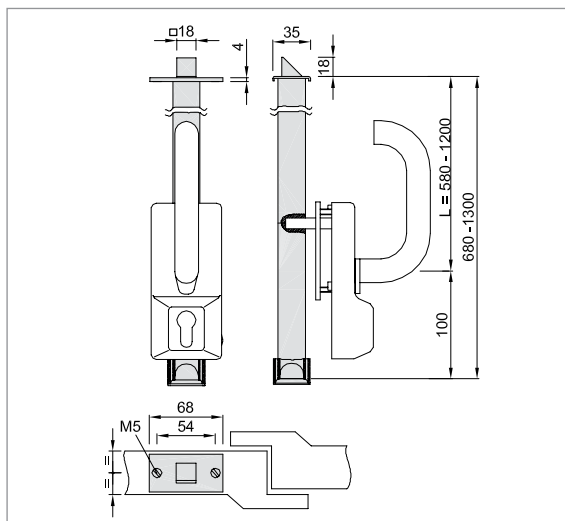
1 piece

latch (without gear box)

Tested and approved, in combination with **6693..** by Staatl. Materialprüfungsamt North Rhine-Westfalia, Dortmund (Material Testing Institute).

We are pleased to place a copy of the test report (P-120002485) at your disposal on request.

from **6091..** to **6097..** and **6791..** to **6797..**



Order example

Piece	Part no.	Finish no.	L
... Piece	6591	.06	580

Standard design**stainless steel**

brushed .82

unit 1 piece

Piece weight

stainless steel 0.396 kg

Mounting

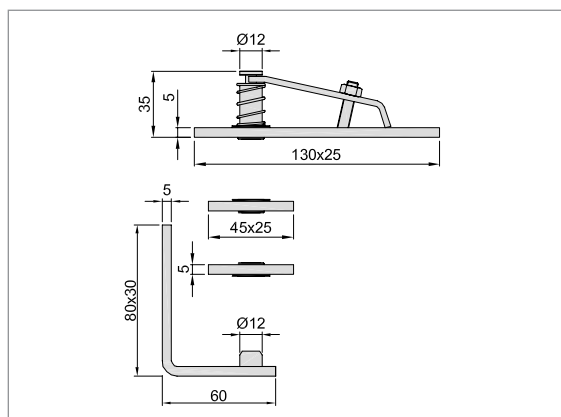
Fix hinge bottom part on door frame. Insert hinge top part into the door frame. Insert spindle receiving parts into the door leaf. Put door leaf onto the hinge bottom part (90° to the door frame). Screw top spindle by means of adjusting screw in the door leaf.

Please refer to the mounting drawing enclosed with the product for further information.

6206..

For doors up to 60 kg without needle bearing

Door hinge with pivot spindle of stainless steel for unrehabbed doors

**Standard design****stainless steel**

brushed .82

unit 1 piece

Piece weight

stainless steel 0.402 kg

Mounting

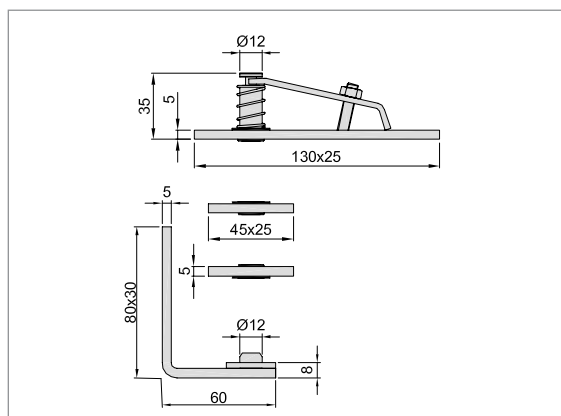
Fix hinge bottom part on door frame. Insert hinge top part into the door frame. Insert spindle receiving parts into the door leaf. Put door leaf onto the hinge bottom part (90° to the door frame). Screw top spindle by means of adjusting screw in the door leaf.

Please refer to the mounting drawing enclosed with the product for further information.

6207..

For doors up to 80 kg with needle bearing

Door hinge with pivot spindle of stainless steel for unrehabbed doors

**Order example**

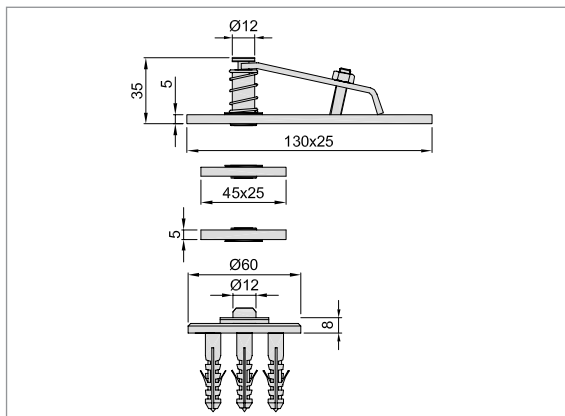
Piece	Part no.	Finish no.
... Piece	6206	.82



6208..

for doors up to 120 kg with
needle bearing

door hinge with pivot spindle
of stainless steel for unrebuted
doors



Standard design

stainless steel

brushed	.82
---------	-----

unit	1 piece
------	---------

Piece weight

stainless steel	0.386 kg
-----------------	----------

Mounting

Mount hinge bottom part on the floor.
Insert hinge top part into the door frame.
Insert spindle receiving parts into the door
leaf. Put door leaf onto the hinge bottom part
(90° to the door frame). Screw top spindle by
means of adjusting screw in the door leaf.
Please refer to the mounting drawing
enclosed with the product for further infor-
mation.

Order example

Piece	Part no.	Finish no.
... Piece	6208	.82

Standard design**stainless steel**

brushed .82

unit 1 piece

Piece weight

stainless steel 0.176 kg

Mounting

The mounting is effected on the door frame on the lock side. Please refer to the mounting drawing enclosed with the product for further information.

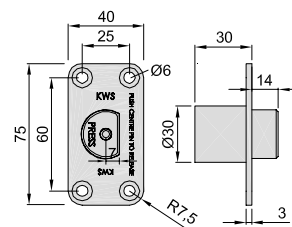
6250..

door stop with hold-back facility

6252..

door stop with hold-back facility with additional release

for unrebuted doors
emergency opening to the
outside, especially for toilet doors
in combination with door hinge
6206.. 6207.. 6208..

**Standard design****stainless steel**

brushed .82

unit 1 piece

Piece weight

stainless steel 0.225 kg

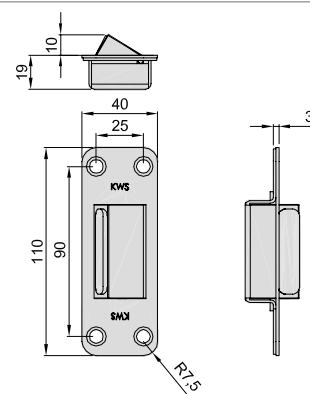
Mounting

The mounting is effected on the door frame on the lock side. Please refer to the mounting drawing enclosed with the product for further information.

6251..

door stop for depressing

for unrebuted doors
emergency opening to the
outside, especially for toilet doors
in combination with door hinge
6206.. 6207.. 6208..

**Order example**

Piece	Part no.	Finish no.
... Piece	6250	.82



6531..

strike plate

**Please indicate:
right or left handed**

Standard design

see 6028..

steel

silver stove enamelled

.02

hot galvanised

.07

unit

1 piece



6533..

catch

Standard design

see 6029..

steel

silver stove enamelled

.02

hot galvanised

.07

unit

1 piece



6536..

catch

Standard design

see 6001.. to 6009....

cast iron

silver stove enamelled

.02

hot galvanised

.07

unit

1 piece



6537..

catch



Standard design

see 6101.. to 6109....

steel

electro-galvanised

.06

stainless steel

brushed

.82

polished

.83

unit

1 piece



6538..

strike plate

**Please indicate:
right or left handed**

Standard design

6538.. see 6129..

6539.. see 6128..

steel

electro-galvanised

.06

stainless steel

brushed

.82

polished

.83

unit

1 piece



6539..

strike plate



Order example

Piece	Part no.	Finish no.	right/left
... Piece	6531	.07	R

Appendix

Numbers Chart

Article	Page	Article	Page	Article	Page
5001..	8	5134..	14	6104..	31
5002..	8	5135..	14	6105..	31
5004..	9	5147..	15	6106..	31
5005..	9	5148..	15	6107..	31
5007..	9	5160..	17	6108..	31
5008..	9	5161..	17	6109..	31
5010..	9	5162..	17	6128..	33
5011..	9	5163..	17	6129..	33
5013..	10	5164..	17	6206..	37
5014..	10	5165..	17	6207..	37
5016..	11	5166..	17	6208..	38
5017..	11	5167..	17	6250..	39
5019..	11	5201..	21	6251..	39
5020..	11	5202..	21	6252..	39
5022..	11	5203..	21	6531..	40
5023..	11	5205..	22	6533..	40
5025..	13	5206..	22	6536..	40
5026..	13	5207..	23	6537..	40
5028..	13	5208..	23	6538..	40
5029..	13	5250..	24	6539..	40
5031..	13	5251..	24	6591..	36
5032..	13	5260..	25	6592..	36
5034..	14	5303..	26	6593..	36
5035..	14	5304..	26	6594..	36
5037..	14	5305..	26	6595..	36
5038..	14	5306..	26	6596..	36
5040..	14	5307..	26	6597..	36
5041..	14	5309..	26	6693..	35
5043..	16	5310..	26	6791..	34
5044..	16	5311..	26	6792..	34
5045..	16	5312..	27	6793..	34
5046..	16	5313..	27	6794..	34
5047..	15	5314..	27	6795..	34
5048..	15	5315..	27	6796..	34
5051..	12	5316..	27	6797..	34
5054..	10	5317..	27		
5055..	18	5907..	9		
5056..	18	5908..	9		
5058..	18	5919..	11		
5059..	18	5920..	11		
5061..	19	5928..	13		
5062..	19	5929..	13		
5064..	19	5937..	14		
5065..	19	5938..	14		
5072..	20				
5073..	20	6001..	30		
5074..	20	6002..	30		
5075..	20	6003..	30		
5101..	8	6004..	30		
5102..	8	6005..	30		
5104..	9	6006..	30		
5105..	9	6007..	30		
5113..	10	6009..	30		
5114..	10	6028..	32		
5116..	11	6029..	32		
5117..	11	6101..	31		
5125..	13	6102..	31		
5126..	13	6103..	31		

Short symbols for the finishes of aluminium

material aluminium anodisable surface treatment subsequently anodised and compacted	Short symbol	1 Effect on surface damage (die marks - slight damage) 2 Structure and appearance
ground - brush-finished	E 4	1 up to completely removed 2 evenly dull-bright
ground - polished	E 5	1 to completely removed 2 smooth and highly brilliant to reflecting
chemically pickled	E 6	1 partly to mostly set off 2 variation option from dull to matt gleaming

Finish codes

raw steel, untreated surface	.01
silver stove enamelled	.02
black stove enamelled	.03
gold stove enamelled	.04
electro-galvanised	.06
hot galvanised	.07
dark brown stove enamelled	.10
special stove enamelled finish	.19

Aluminium E 4

natural finish, surface untreated	.20
ground and brushed	.21
KWS 1 silver anodised	.22
KWS 2 nickel silver anodised	.23
KWS 3 gold anodised	.24
special anodised colour	.26
KWS 4 light bronze anodised	.27
KWS 5 dark bronze anodised	.28
KWS 6 black anodised	.29

Aluminium E 5

natural finish, ground and polished	.30
KWS 1 silver anodised	.31
KWS 2 nickel silver anodised	.32
KWS 3 gold anodised	.33
brushed stainless steel effect anodised	.35
KWS 4 light bronze anodised	.36
KWS 5 dark bronze anodised	.37
KWS 6 black anodised	.38
special anodised colour	.39

Aluminium E 6

natural finish, chemical dipped	.40
KWS 1 silver anodised	.41
KWS 2 nickel silver anodised	.42
KWS 3 gold anodised	.43
KWS 4 light bronze anodised	.46
KWS 5 dark bronze anodised	.47
KWS 6 black anodised	.48
special anodised colour	.49

Brass

natural finish	.60
brushed and waxed	.61
brushed and lacquered	.62
nickel plated	.63
polished and waxed	.65
polished and lacquered	.66

Plastic coated colours

	.70
golden yellow	RAL 1004
flame red	RAL 3000
ruby red (.76)	RAL 3003
wine red	RAL 3005
sapphire blue (.75)	RAL 5003
brilliant blue	RAL 5007
azure blue	RAL 5009
leaf green	RAL 6002
moss green	RAL 6005
olive drab	RAL 6022
stone grey	RAL 7030
sepia brown	RAL 8014
mahogany brown	RAL 8016
dark brown (.74)	RAL 8077
grey white	RAL 9002
pure white (.71)	RAL 9010
graphite black (.73)	RAL 9011
traffic white (.72)	RAL 9016
other RAL colours on request	

Stainless steel

natural finish	.80
brushed	.82
polished	.83

Plastic / rubber / wood

PVC	.95
rubber	.96
beech wood	.98

HELM Range

TEH_01	Hardware for Sliding Wardrobe Doors
TEH_02H	Hardware for Sliding Doors (Wood)
TEH_02G	Hardware for Sliding Doors (Glass)
TEH_02D	Design Hardware for Sliding Doors (Wood and Glass)
TEH_06	Hardware for Sliding Gates
TEH_09	Hardware for Gateway Gates
TEH_11	Hardware for Curtains and Tarpaulins
TEH_12	Safety Equipment against Falls from a Height (PSE)
TEH_40	Hardware for Sliding Shutters



TEH_01



TEH_02H



TEH_02G



TEH_02D



TEH_06



TEH_09



TEH_11



TEH_12



TEH_40

KWS Range

TEK_0102	Door Holders and Door Stops
TEK_0308	Door Pulls, Door Handles and Accessories
TEK_0506	Flush Pulls and Locks
TEK_0407	Hardware for Handrails, Floor Rails, Coat Racks and Toilet Partition Walls



TEK_0102



TEK_0308



TEK_0506



TEK_0407

The technical specifications are up-to-date. We reserve the right to make modifications with regard to design and styling which serve the purpose of technical improvement. We appreciate your understanding that we assume no liability for any typing errors or any other errors. The reproduction of this document, in extracts or complete, is not permitted without our express written permission.

Part no.: TEK_0506/05.2014
This catalogue supersedes all previous catalogues.

Woelm GmbH

Hasselbecker Str. 2-4
D - 42579 Heiligenhaus
Phone: + 49 (0) 20 56 - 18 - 0
Telefax: + 49 (0) 20 56 - 18 - 21
www.woelm.de
contact@woelm.de

Woelm Austria GmbH

Seewalchen 5a
A - 5201 Seekirchen
Phone: + 43 (0) 62 12 - 25 02
Telefax: + 43 (0) 62 12 - 69 95
www.woelm.at
contact@woelm.at